

For Research Use Only

# CoraLite® Plus 488-conjugated RPS4X Recombinant antibody

Catalog Number: CL488-85040-5



## Basic Information

Catalog Number:

CL488-85040-5

Concentration:

1000 ug/ml

Source:

Rabbit

Isotype:

IgG

Immunogen Catalog Number:

AG6513

GenBank Accession Number:

BC000472

GeneID (NCBI):

6191

UNIPROT ID:

P62701

Full Name:

ribosomal protein S4, X-linked

Calculated MW:

263 aa, 30 kDa

Observed MW:

28-30 kDa

Purification Method:

Protein A purification

CloneNo.:

242697E12

Recommended Dilutions:

IF/ICC: 1:50-1:500

Excitation/Emission maxima  
wavelengths:

493 nm / 522 nm

## Applications

Tested Applications:

IF/ICC

Species Specificity:

human, mouse, rat

Positive Controls:

IF/ICC : MCF-7 cells,

## Background Information

RPS4X, a X-linked gene in the human, encodes a subunit of ribosomal protein S4, a component of the 40S subunit and 60S subunit. Ribosomal protein S4 is the only ribosomal protein known to be encoded by more than one gene, namely this gene, RPS4Y2 and the ribosomal protein S4, X-linked (RPS4X). (PMID:8358435)

## Storage

Storage:

Store at -20°C. Avoid exposure to light. Stable for one year after shipment.

Storage Buffer:

PBS with 50% glycerol, 0.05% Proclin300, 0.5% BSA, pH7.3

Aliquoting is unnecessary for -20°C storage

For technical support and original validation data for this product please contact:

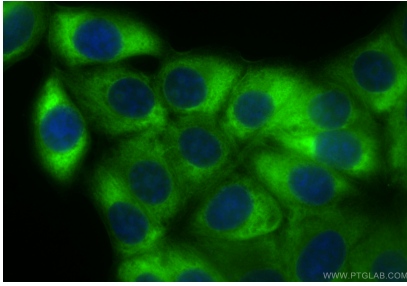
T: 4006900926

E: [Proteintech-CN@ptglab.com](mailto:Proteintech-CN@ptglab.com)

W: [ptgcn.com](http://ptgcn.com)

This product is exclusively available under Proteintech Group brand and is not available to purchase from any other manufacturer.

## Selected Validation Data



Immunofluorescent analysis of (-20°C Methanol) fixed MCF-7 cells using CoraLite® Plus 488 RPS4X antibody (CL488-85040-5, Clone: 242697E12 ) at dilution of 1:200.