

For Research Use Only

CoraLite® Plus 488-conjugated HEXIM1 Recombinant monoclonal antibody

Catalog Number: CL488-85028



Basic Information

Catalog Number:

CL488-85028

Source:

Rabbit

Isotype:

IgG

Immunogen Catalog Number:

AG8144

GenBank Accession Number:

BC006460

GeneID (NCBI):

10614

UNIPROT ID:

O94992

Full Name:

hexamethylene bis-acetamide
inducible 1

Calculated MW:

41 kDa

Observed MW:

65 kDa

Purification Method:

Protein A purification

CloneNo.:

242587A2

Recommended Dilutions:

IF/ICC: 1:50-1:500

Excitation/Emission maxima
wavelengths:

493 nm / 522 nm

Applications

Tested Applications:

IF/ICC

Species Specificity:

human

Positive Controls:

IF/ICC : HeLa cells,

Background Information

HEXIM1, also named CLP1, EDG1, HIS1 or MAQ1, is best known as the inhibitor of positive transcription elongation factor b, which regulates the transcription elongation of RNA polymerase II and controls 60-70% of mRNA synthesis. HEXIM1 regulates NF-kappa-B, ESR1, NR3C1 and CIITA-dependent transcriptional activity. Previous studies showed that HEXIM1 interacts with two key p53 regulators, nucleophosmin and HDM2, implying a possible connection between HEXIM1 and the p53 signaling pathway. The mainstream MW of this protein is 65-70 kDa and 54 kDa (PMID: 33627647, PMID: 20976203, PMID: 28254838).

Storage

Storage:

Store at -20°C. Avoid exposure to light. Stable for one year after shipment.

Storage Buffer:

PBS with 50% glycerol, 0.05% Proclin300, 0.5% BSA, pH7.3

Aliquoting is unnecessary for -20°C storage

For technical support and original validation data for this product please contact:

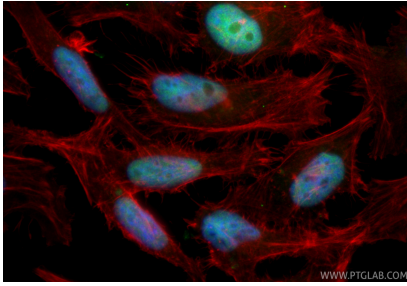
T: 4006900926

E: Proteintech-CN@ptglab.com

W: ptgcn.com

This product is exclusively available under Proteintech Group brand and is not available to purchase from any other manufacturer.

Selected Validation Data



Immunofluorescent analysis of (4% PFA) fixed HeLa cells using CoraLite® Plus 488 HEXIM1 antibody (CL488-85028, Clone: 242587A2) at dilution of 1:200, CL594-Phalloidin (red).