

For Research Use Only

# CoraLite® Plus 488-conjugated CD29 Recombinant antibody

Catalog Number: CL488-85005



## Basic Information

### Catalog Number:

CL488-85005

### Concentration:

1000 ug/ml

### Source:

Rabbit

### Isotype:

IgG

### Immunogen Catalog Number:

EG2093

### GenBank Accession Number:

BC020057

### GeneID (NCBI):

3688

### ENSEMBL Gene ID:

ENSG00000150093

### UNIPROT ID:

P05556

### Full Name:

integrin, beta 1 (fibronectin receptor,  
beta polypeptide, antigen CD29  
includes MDF2, MSK12)

### Calculated MW:

88 kDa

### Purification Method:

Protein A purification

### CloneNo.:

241684B11

### Recommended Dilutions:

IF/ICC: 1:50-1:500

### Excitation/Emission maxima wavelengths:

493 nm / 522 nm

## Applications

### Tested Applications:

IF/ICC

### Species Specificity:

human

### Positive Controls:

IF/ICC : HeLa cells,

## Background Information

Integrin beta-1 (ITGB1), also named as CD29, is a single chain type I glycoprotein that is expressed in a heterodimeric complex with one of six distinct  $\alpha$  subunits, comprising the very late activation antigen (VLA) subfamily of adhesion receptors. It is one of the essential surface molecules expressed on human MSC from bone marrow and other sources. The  $\beta$  1 subunit is also broadly expressed on lymphocytes and monocytes, weakly expressed on granulocytes, and not expressed on erythrocytes. These receptors are involved in a variety of cell-cell and cell-matrix interactions.

## Storage

### Storage:

Store at -20°C. Avoid exposure to light. Stable for one year after shipment.

### Storage Buffer:

PBS with 50% glycerol, 0.05% Proclin300, 0.5% BSA, pH7.3

Aliquoting is unnecessary for -20°C storage

For technical support and original validation data for this product please contact:

T: 4006900926

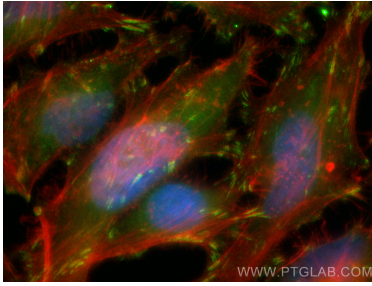
E: [Proteintech-CN@ptglab.com](mailto:Proteintech-CN@ptglab.com)

W: [ptgcn.com](http://ptgcn.com)

This product is exclusively available under Proteintech Group brand and is not available to purchase from any other manufacturer.

---

## Selected Validation Data



Immunofluorescent analysis of (4% PFA) fixed HeLa cells using CoraLite® Plus 488 CD29 antibody (CL488-85005, Clone: 241684B11 ) at dilution of 1:200, CL594-Phalloidin (red).