

For Research Use Only

CoraLite® Plus 488-conjugated CUL4B Recombinant monoclonal antibody

Catalog Number: CL488-85001-4



Basic Information

Catalog Number:

CL488-85001-4

Source:

Rabbit

Isotype:

IgG

Immunogen Catalog Number:

AG3563

GenBank Accession Number:

BC036216

GeneID (NCBI):

8450

UNIPROT ID:

Q13620

Full Name:

cullin 4B

Calculated MW:

913 aa, 104 kDa

Purification Method:

Protein A purification

CloneNo.:

242626F11

Recommended Dilutions:

IF/ICC: 1:300-1:1200

Excitation/Emission maxima
wavelengths:

493 nm / 522 nm

Applications

Tested Applications:

IF/ICC

Species Specificity:

human

Positive Controls:

IF/ICC : HeLa cells,

Background Information

Cullin-RING ligases (CRLs) complexes participate in the regulation of diverse cellular processes, including cell cycle progression, transcription, signal transduction and development (PMID: 21816341)(PMID: 21554755). Serving as the scaffold protein, cullins are crucial for the assembly of ligase complexes, which recognize and target various substrates for proteasomal degradation. Two cullin 4 (CUL4) proteins, CUL4A (87 kDa) and CUL4B(104 kDa), are two members in cullin family with 83% of identity. Mutations in human CUL4B are one of the major causes of X-linked mental retardation. Cul4b knockout mice demonstrated that CUL4B is indispensable for embryonic development in the mouse (PMID: 22606329).

Storage

Storage:

Store at -20°C. Avoid exposure to light. Stable for one year after shipment.

Storage Buffer:

PBS with 50% glycerol, 0.05% Proclin300, 0.5% BSA, pH7.3

Aliquoting is unnecessary for -20°C storage

For technical support and original validation data for this product please contact:

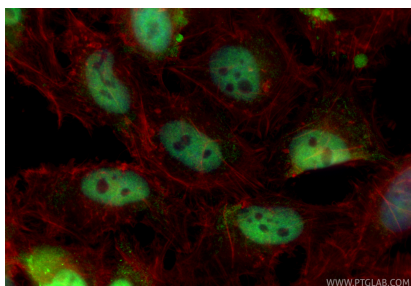
T: 4006900926

E: Proteintech-CN@ptglab.com

W: ptgcn.com

This product is exclusively available under Proteintech Group brand and is not available to purchase from any other manufacturer.

Selected Validation Data



Immunofluorescent analysis of (4% PFA) fixed HeLa cells using CoraLite® Plus 488 CUL4B antibody (CL488-85001-4, Clone: 242626F11) at dilution of 1:600, CL594-Phalloidin (red).