

For Research Use Only

CoraLite® Plus 488-conjugated Cytokeratin 17-specific Recombinant antibody

Catalog Number: CL488-84978



Basic Information

Catalog Number: CL488-84978	GenBank Accession Number: NM_000422	Purification Method: Protein A purification
Concentration: 1000 ug/ml	GeneID (NCBI): 3872	CloneNo.: 242240A8
Source: Rabbit	UNIPROT ID: Q04695	Recommended Dilutions: IF/ICC 1:50-1:500
Isotype: IgG	Full Name: keratin 17	Excitation/Emission maxima wavelengths: 493 nm / 522 nm
	Calculated MW: 48 kDa	
	Observed MW: 48 kDa	

Applications

Tested Applications: IF/ICC	Positive Controls: IF/ICC : HaCaT cells, HeLa cells
Species Specificity: human, mouse, rat	

Background Information

Keratins are a large family of proteins that form the intermediate filaments that make up the cytoskeleton. Type I keratins are a group of acidic intermediate filament proteins and type II keratins are the basic or neutral counterparts. Keratin 17 is encoded by the KRT17 gene and is a type I cytokeratin found in nail beds, hair follicles, sebaceous glands, and epidermal appendages. The molecular weight of cytokeratin 17 is approximately 49 kDa. Cytokeratin 17 plays a role in the formation and maintenance of epidermal appendages, especially in determining the shape and orientation of hair. It is required for the maintenance of the anagen (growth) state of hair follicles by modulating the function of TNF-alpha for hair cycling and is also involved in tissue repair (PMID: 16702408).

Storage

Storage:
Store at -20°C. Avoid exposure to light. Stable for one year after shipment.
Storage Buffer:
PBS with 50% glycerol, 0.05% Proclin300, 0.5% BSA, pH7.3
Aliquoting is unnecessary for -20°C storage

For technical support and original validation data for this product please contact:

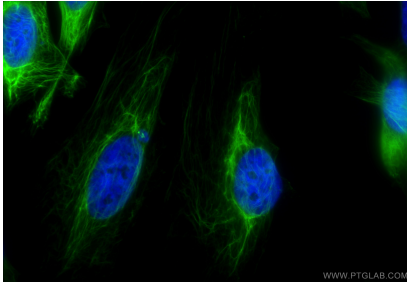
T: 4006900926

E: Proteintech-CN@ptglab.com

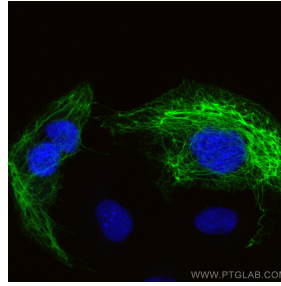
W: ptgcn.com

This product is exclusively available under Proteintech Group brand and is not available to purchase from any other manufacturer.

Selected Validation Data



Immunofluorescent analysis of (-20°C Ethanol) fixed HeLa cells using CoraLite® Plus 488 Cytokeratin 17-specific antibody (CL488-84978, Clone: 242240A8) at dilution of 1:200.



Immunofluorescent analysis of (-20°C Methanol) fixed HaCaT cells using CoraLite® Plus 488 Cytokeratin 17-specific antibody (CL488-84978, Clone: 242240A8) at dilution of 1:200.