

For Research Use Only

CoraLite® Plus 488-conjugated GS28 Recombinant antibody

Catalog Number: CL488-84971-3



Basic Information

Catalog Number:

CL488-84971-3

Concentration:

1000 ug/ml

Source:

Rabbit

Isotype:

IgG

Immunogen Catalog Number:

AG9021

GenBank Accession Number:

BC012620

GeneID (NCBI):

9527

UNIPROT ID:

O95249

Full Name:

golgi SNAP receptor complex member

1

Calculated MW:

28.6 kDa

Observed MW:

28 kDa

Purification Method:

Protein A purification

CloneNo.:

242552G12

Recommended Dilutions:

IF/ICC: 1:50-1:500

Excitation/Emission maxima

wavelengths:

493 nm / 522 nm

Applications

Tested Applications:

IF/ICC

Species Specificity:

human, mouse, rat

Positive Controls:

IF/ICC : HeLa cells,

Background Information

GS28, also known as GOSR1, is a 28-kDa Golgi SNARE protein that participates in ER-Golgi and intra-Golgi transport. GS28 is considered to be a core component of the Golgi SNARE complex. (PMID: 8638159)

Storage

Storage:

Store at -20°C. Avoid exposure to light. Stable for one year after shipment.

Storage Buffer:

PBS with 50% glycerol, 0.05% Proclin300, 0.5% BSA, pH7.3

Aliquoting is unnecessary for -20°C storage

For technical support and original validation data for this product please contact:

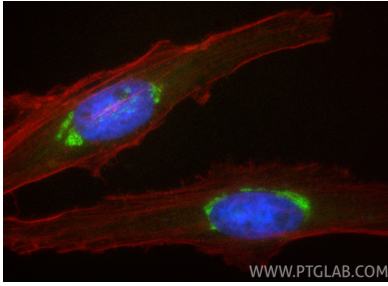
T: 4006900926

E: Proteintech-CN@ptglab.com

W: ptgcn.com

This product is exclusively available under Proteintech Group brand and is not available to purchase from any other manufacturer.

Selected Validation Data



Immunofluorescent analysis of (4% PFA) fixed HeLa cells using CoraLite® Plus 488 G528 antibody (CL488-84971-3, Clone: 242552G12) at dilution of 1:200, CL594-Phalloidin (red).