

For Research Use Only

CoraLite® Plus 488-conjugated RBM25 Recombinant monoclonal antibody

Catalog Number: CL488-84968-4



Basic Information

Catalog Number:

CL488-84968-4

Source:

Rabbit

Isotype:

IgG

Immunogen Catalog Number:

AG18244

GenBank Accession Number:

BC113389

GeneID (NCBI):

58517

UNIPROT ID:

P49756

Full Name:

RNA binding motif protein 25

Calculated MW:

843 aa, 100 kDa

Observed MW:

110-120 kDa

Purification Method:

Protein A purification

CloneNo.:

242526B7

Recommended Dilutions:

IF/ICC: 1:50-1:500

Excitation/Emission maxima
wavelengths:

493 nm / 522 nm

Applications

Tested Applications:

IF/ICC

Species Specificity:

human, mouse

Positive Controls:

IF/ICC : HeLa cells,

Background Information

RNA-binding protein 25 (RBM25), also named as Protein S164 or RNPC7, is a 843 amino acid protein, which contains one RRM domain and one PWI domain. RBM25 localizes in the nucleus and cytoplasm. RBM25 acts as a regulator of alternative pre-mRNA splicing and is involved in apoptotic cell death through the regulation of the apoptotic factor BCL2L1 isoform expression.

Storage

Storage:

Store at -20°C. Avoid exposure to light. Stable for one year after shipment.

Storage Buffer:

PBS with 50% glycerol, 0.05% Proclin300, 0.5% BSA, pH7.3

Aliquoting is unnecessary for -20°C storage

For technical support and original validation data for this product please contact:

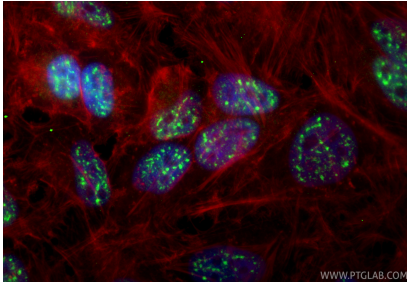
T: 4006900926

E: Proteintech-CN@ptglab.com

W: ptgcn.com

This product is exclusively available under Proteintech Group brand and is not available to purchase from any other manufacturer.

Selected Validation Data



Immunofluorescent analysis of (4% PFA) fixed HeLa cells using CoraLite® Plus 488 RBM25 antibody (CL488-84968-4, Clone: 242526B7) at dilution of 1:200, CL594-Phalloidin (red).