

For Research Use Only

CoraLite® Plus 488-conjugated Eg5 Recombinant antibody

Catalog Number: CL488-84966-2



Basic Information

Catalog Number:

CL488-84966-2

Concentration:

1000 ug/ml

Source:

Rabbit

Isotype:

IgG

Immunogen Catalog Number:

AG20001

GenBank Accession Number:

BC136474

GeneID (NCBI):

3832

UNIPROT ID:

P52732

Full Name:

kinesin family member 11

Calculated MW:

1056 aa, 119 kDa

Observed MW:

120-130 kDa

Purification Method:

Protein A purification

CloneNo.:

242611D10

Recommended Dilutions:

IF/ICC: 1:50-1:500

Excitation/Emission maxima
wavelengths:

493 nm / 522 nm

Applications

Tested Applications:

IF/ICC

Species Specificity:

human

Positive Controls:

IF/ICC : HepG2 cells,

Background Information

Eg5 is a plus-end-directed microtubule motor encoded by KIF11 gene. It is an essential mitotic kinesin that plays a pivotal role in the formation and maintenance of bipolar spindle during early prometaphase. Eg5 has been implicated in tumorigenesis, and its overexpression has been found in various cancer tissues.

Storage

Storage:

Store at -20°C. Avoid exposure to light. Stable for one year after shipment.

Storage Buffer:

PBS with 50% glycerol, 0.05% Proclin300, 0.5% BSA, pH7.3

Aliquoting is unnecessary for -20°C storage

For technical support and original validation data for this product please contact:

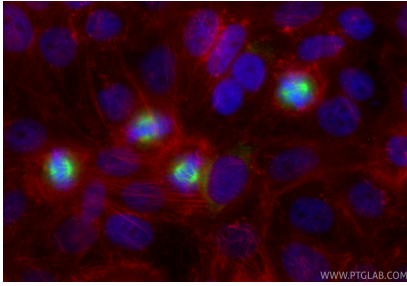
T: 4006900926

E: Proteintech-CN@ptglab.com

W: ptgcn.com

This product is exclusively available under Proteintech Group brand and is not available to purchase from any other manufacturer.

Selected Validation Data



Immunofluorescent analysis of (4% PFA) fixed HepG2 cells using CoraLite® Plus 488 EGF5 antibody (CL488-84966-2, Clone: 242611D10) at dilution of 1:200, CL594-Phalloidin (red).