

CoraLite® Plus 488-conjugated RCN2 Recombinant monoclonal antibody

Catalog Number: CL488-84956-4

Basic Information

Catalog Number:

CL488-84956-4

Source:

Rabbit

Isotype:

IgG

Immunogen Catalog Number:

AG0247

GenBank Accession Number:

BC004892

GeneID (NCBI):

5955

UNIPROT ID:

Q14257

Full Name:reticulocalbin 2, EF-hand calcium
binding domain**Calculated MW:**

37 kDa

Observed MW:

55 kDa

Purification Method:

Protein A purification

CloneNo.:

242612A4

Recommended Dilutions:

IF/ICC: 1:50-1:500

**Excitation/Emission maxima
wavelengths:**

493 nm / 522 nm

Applications

Tested Applications:

IF/ICC

Species Specificity:

human, mouse, rat

Positive Controls:

IF/ICC : HeLa cells,

Background Information

Reticulocalbin-2 (RCN2) is also named as endoplasmic reticulum Ca²⁺-binding protein of 55 kDa (ERC55) and E6-binding protein (E6BP). It is strictly located in endoplasmic reticulum (PMID: 34094681). RCN2 is a low-affinity Ca²⁺ binding protein localized to the secretory pathway of mammalian cells, belongs to a member of the EF-hand Ca²⁺ binding protein family, which participate in the secretory process, chaperone activity, signal transduction as well as participation in a large variety of disease processes (PMID: 19260022). As for cancer research, several studies showed that RCN2 was related to tumor progression, such as mammary cancer, cervical cancer, neck squamous cell carcinoma and colorectal cancer (PMID: 16351756, PMID: 32422974). RCN2 played a pivotal role in HCC pathogenesis through regulating activation of the epidermal growth factor receptor (EGFR) pathway and modulating epidermal growth factor receptor EGFR dimerization and internalization (PMID: 28745317).

Storage

Storage:

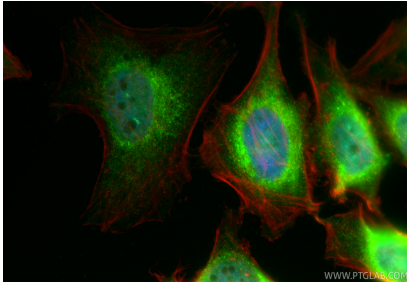
Store at -20°C. Avoid exposure to light. Stable for one year after shipment.

Storage Buffer:

PBS with 50% glycerol, 0.05% Proclin300, 0.5% BSA, pH7.3

Aliquoting is unnecessary for -20°C storage

Selected Validation Data



Immunofluorescent analysis of (4% PFA) fixed HeLa cells using Coralite® Plus 488 RCN2 antibody (CL488-84956-4, Clone: 242612A4) at dilution of 1:200, CL594-phalloidin (red).