

For Research Use Only

# CoraLite® Plus 488-conjugated FEN1 Recombinant antibody

Catalog Number: CL488-84916-5



## Basic Information

<b>Catalog Number:</b> CL488-84916-5	<b>GenBank Accession Number:</b> BC000323	<b>Purification Method:</b> Protein A purification
<b>Concentration:</b> 1000 ug/ml	<b>GeneID (NCBI):</b> 2237	<b>CloneNo.:</b> 242330C10
<b>Source:</b> Rabbit	<b>UNIPROT ID:</b> P39748	<b>Recommended Dilutions:</b> IF/ICC: 1:50-1:500
<b>Isotype:</b> IgG	<b>Full Name:</b> flap structure-specific endonuclease 1	<b>Excitation/Emission maxima wavelengths:</b> 493 nm / 522 nm
<b>Immunogen Catalog Number:</b> AG6552	<b>Calculated MW:</b> 43 kDa	

## Applications

<b>Tested Applications:</b> IF/ICC	<b>Positive Controls:</b> IF/ICC : HeLa cells,
<b>Species Specificity:</b> human	

## Background Information

FEN1(Flap endonuclease-1) is the prototypical member of the 5'-nuclease superfamily, whose activities span a range of cellular pathways involved in DNA replication and genome maintenance (PMID: 22118811, 21496641, 20929870). FEN1 is a structure-selective metallonuclease essential for Okazaki fragment maturation through efficient removal of 5' flaps resulting from strand displacement during lagging-strand synthesis (PMID: 8144677, 9081985). FEN1 is overexpressed in multiple cancer types, and has been suggested both as a biomarker relating to prognosis and disease progression and as a potential therapeutic target (PMID: 19010819, 16879693, 19596913, 27526030).

## Storage

**Storage:**  
Store at -20°C. Avoid exposure to light. Stable for one year after shipment.  
**Storage Buffer:**  
PBS with 50% glycerol, 0.05% Proclin300, 0.5% BSA, pH7.3  
Aliquoting is unnecessary for -20°C storage

For technical support and original validation data for this product please contact:

T: 4006900926

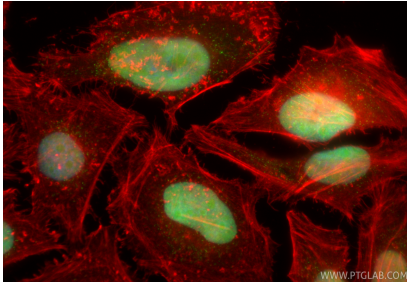
E: [Proteintech-CN@ptglab.com](mailto:Proteintech-CN@ptglab.com)

W: [ptgcn.com](http://ptgcn.com)

This product is exclusively available under Proteintech Group brand and is not available to purchase from any other manufacturer.

---

## Selected Validation Data



Immunofluorescent analysis of (4% PFA) fixed HeLa cells using CoraLite® Plus 488 FEN1 antibody (CL488-84916-5, Clone: 242330C10 ) at dilution of 1:200, CL594-Phalloidin (red).