

For Research Use Only

CoraLite® Plus 488-conjugated Chk1 Recombinant antibody

Catalog Number: CL488-84905



Basic Information

Catalog Number: CL488-84905	GenBank Accession Number: BC004202	Purification Method: Protein A purification
Concentration: 1000 ug/ml	GeneID (NCBI): 1111	CloneNo.: 240618E11
Source: Rabbit	UNIPROT ID: O14757	Recommended Dilutions: IF/ICC: 1:50-1:500
Isotype: IgG	Full Name: CHK1 checkpoint homolog (S. pombe)	Excitation/Emission maxima wavelengths: 493 nm / 522 nm
Immunogen Catalog Number: AG22993	Calculated MW: 54 kDa	
	Observed MW: 55 kDa	

Applications

Tested Applications: IF/ICC	Positive Controls: IF/ICC : HEK-293 cells,
Species Specificity: human	

Background Information

CHEK1(Checkpoint kinase-1) is also named as CHK1 and belongs to the protein kinase superfamily. It is implicated in a circuit in which it activates checkpoints, DNA repair and proliferating cell nuclear antigen and FANCD2 monoubiquitinylation(PMID:21389083). CHEK1 protects vertebrate cells against spontaneous chromosome missegregation and is required to sustain anaphase delay when spindle function is disrupted by taxol(PMID:17276342). It has 3 isoforms produced by alternative splicing with the molecular mass of 54 kDa, 44 kDa and 50 kDa.

Storage

Storage:
Store at -20°C. Avoid exposure to light. Stable for one year after shipment.
Storage Buffer:
PBS with 50% glycerol, 0.05% Proclin300, 0.5% BSA, pH7.3
Aliquoting is unnecessary for -20°C storage

For technical support and original validation data for this product please contact:

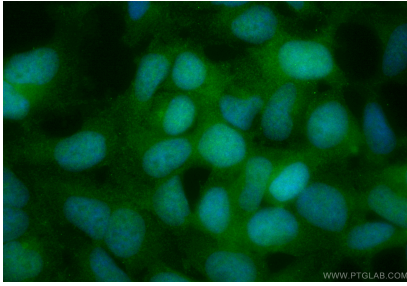
T: 4006900926

E: Proteintech-CN@ptglab.com

W: ptgcn.com

This product is exclusively available under Proteintech Group brand and is not available to purchase from any other manufacturer.

Selected Validation Data



Immunofluorescent analysis of (4% PFA) fixed HEK-293 cells using CoraLite® Plus 488 Chk1 antibody (CL488-84905, Clone: 240618E11) at dilution of 1:200.