

For Research Use Only

CoraLite® Plus 488-conjugated BCL3 Recombinant antibody

Catalog Number: CL488-84882-5



Basic Information

Catalog Number:

CL488-84882-5

Concentration:

1000 ug/ml

Source:

Rabbit

Isotype:

IgG

Immunogen Catalog Number:

AG13375

GenBank Accession Number:

BC064993

GeneID (NCBI):

602

UNIPROT ID:

P20749

Full Name:

B-cell CLL/Lymphoma 3

Calculated MW:

446 aa, 47 kDa

Observed MW:

48-60 kDa

Purification Method:

Protein A purification

CloneNo.:

242233B11

Recommended Dilutions:

IF/ICC: 1:50-1:500

Excitation/Emission maxima
wavelengths:

493 nm / 522 nm

Applications

Tested Applications:

IF/ICC

Species Specificity:

human, mouse

Positive Controls:

IF/ICC : HeLa cells,

Background Information

BCL3 (B-cell lymphoma 3 protein) has seven ankyrin repeat domains, a proline-rich N terminal domain and a serine- and proline-rich C-terminal domain (PMID: 31930327). BCL3 is an important contributor to chronic inflammatory disease states, such as osteoarthritis and rheumatoid arthritis (PMID: 12483727). BCL3 is a predominantly nuclear protein containing a trans-activation domain, and it can be recruited to NF- κ B-responsive promoters, resulting in transcriptional activation or repression depending on the subunit composition of NF- κ B complexes (PMID: 25089799, PMID: 30135206). BCL3 is known to be overexpressed in human breast cancers and is associated with reduced metastasis-free survival (PMID: 38255248).

Storage

Storage:

Store at -20°C. Avoid exposure to light. Stable for one year after shipment.

Storage Buffer:

PBS with 50% glycerol, 0.05% Proclin300, 0.5% BSA, pH7.3

Aliquoting is unnecessary for -20°C storage

For technical support and original validation data for this product please contact:

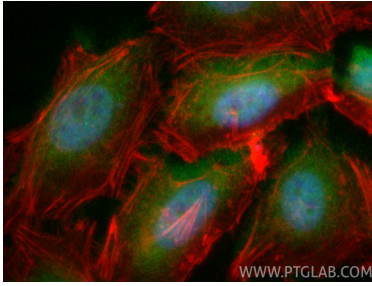
T: 4006900926

E: Proteintech-CN@ptglab.com

W: ptgcn.com

This product is exclusively available under Proteintech Group brand and is not available to purchase from any other manufacturer.

Selected Validation Data



Immunofluorescent analysis of (4% PFA) fixed HeLa cells using CoraLite® Plus 488 BCL3 antibody (CL488-84882-5, Clone: 242233B11) at dilution of 1:200, CL594-Phalloidin (red).