

For Research Use Only

CoraLite® Plus 488-conjugated GOLIM4 Recombinant antibody

Catalog Number:CL488-84818-5



Basic Information

Catalog Number:

CL488-84818-5

Concentration:

1000 ug/ml

Source:

Rabbit

Isotype:

IgG

Immunogen Catalog Number:

AG34962

GenBank Accession Number:

NM_014498

GeneID (NCBI):

27333

UNIPROT ID:

O00461

Full Name:

golgi integral membrane protein 4

Calculated MW:

82 kDa

Observed MW:

130-140 kDa

Purification Method:

Protein A purification

CloneNo.:

242323F4

Recommended Dilutions:

IF/ICC 1:50-1:500

Excitation/Emission maxima
wavelengths:

493 nm / 522 nm

Applications

Tested Applications:

IF/ICC

Species Specificity:

human, mouse

Positive Controls:

IF/ICC : HeLa cells,

Background Information

Golgi integral membrane protein 4 (GOLIM4) is a 130-kDa membrane protein that is integrated into the cis/medial Golgi apparatus, which is a kind II Golgi protein. GOLIM4 is a Golgi protein that circulates between Golgi apparatus and endosomes, and its shuttle is pH sensitive(PMID:30068697).

Storage

Storage:

Store at -20°C. Avoid exposure to light. Stable for one year after shipment.

Storage Buffer:

PBS with 50% glycerol, 0.05% Proclin300, 0.5% BSA, pH7.3

Aliquoting is unnecessary for -20°C storage

For technical support and original validation data for this product please contact:

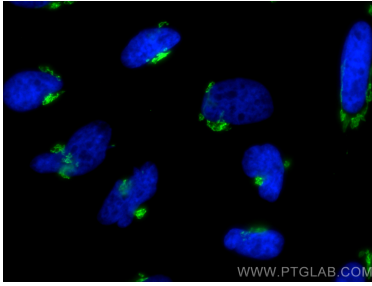
T: 4006900926

E: Proteintech-CN@ptglab.com

W: ptgcn.com

This product is exclusively available under Proteintech Group brand and is not available to purchase from any other manufacturer.

Selected Validation Data



Immunofluorescent analysis of (4% PFA) fixed HeLa cells using CoraLite® Plus 488 GOLIM4 antibody (CL488-84818-5, Clone: 242323F4) at dilution of 1:200.