

For Research Use Only

CoraLite® Plus 488-conjugated ALPPL2 Recombinant monoclonal antibody

Catalog Number: **CL488-84813**



Basic Information

Catalog Number:

CL488-84813

Source:

Rabbit

Isotype:

IgG

Immunogen Catalog Number:

AG13360

GenBank Accession Number:

BC014139

GeneID (NCBI):

251

UNIPROT ID:

P10696

Full Name:

alkaline phosphatase, placental-like
2

Calculated MW:

57 kDa

Observed MW:

70 kDa

Purification Method:

Protein A purification

CloneNo.:

241867A12

Recommended Dilutions:

IF-P: 1:50-1:500

Excitation/Emission maxima
wavelengths:

493 nm / 522 nm

Applications

Tested Applications:

IF-P

Species Specificity:

human

Positive Controls:

IF-P: human placenta tissue,

Background Information

ALPPL2 (alkaline phosphatase placental-like 2), a member of the human alkaline phosphatase family, could be a potential biomarker for early diagnosis of Pancreatic ductal adenocarcinoma.

Storage

Storage:

Store at -20°C. Avoid exposure to light. Stable for one year after shipment.

Storage Buffer:

PBS with 50% glycerol, 0.05% Proclin300, 0.5% BSA, pH7.3

Aliquoting is unnecessary for -20°C storage

For technical support and original validation data for this product please contact:

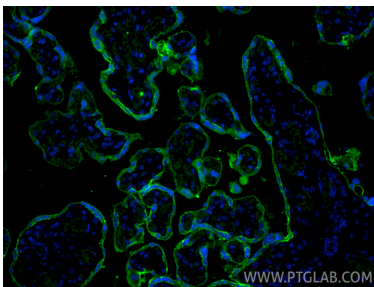
T: 4006900926

E: Proteintech-CN@ptglab.com

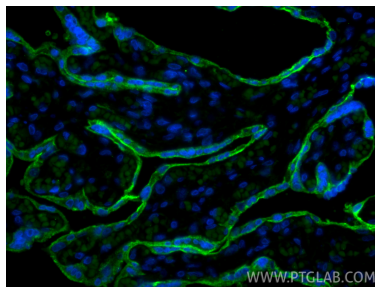
W: ptgcn.com

This product is exclusively available under Proteintech Group brand and is not available to purchase from any other manufacturer.

Selected Validation Data



Immunofluorescent analysis of (4% PFA) fixed paraffin-embedded human placenta tissue using CoraLite® Plus 488 ALPPL2 antibody (CL488-84813, Clone: 241867A12) at dilution of 1:200. Heat mediated antigen retrieval with Tris-EDTA buffer (pH 9.0).



Immunofluorescent analysis of (4% PFA) fixed paraffin-embedded human placenta tissue using CoraLite® Plus 488 ALPPL2 antibody (CL488-84813, Clone: 241867A12) at dilution of 1:200. Heat mediated antigen retrieval with Tris-EDTA buffer (pH 9.0).