

For Research Use Only

CoraLite® Plus 488-conjugated LRRFIP1 Recombinant antibody

Catalog Number: CL488-84778-4



Basic Information

Catalog Number:

CL488-84778-4

Concentration:

1000 ug/ml

Source:

Rabbit

Isotype:

IgG

Immunogen Catalog Number:

AG34760

GenBank Accession Number:

BC108914

GeneID (NCBI):

9208

UNIPROT ID:

Q32MZ4

Full Name:

leucine rich repeat (in FLII)
interacting protein 1

Observed MW:

170 kDa

Purification Method:

Protein A purification

CloneNo.:

242161C9

Recommended Dilutions:

IF/ICC: 1:50-1:500

Excitation/Emission maxima
wavelengths:

493 nm / 522 nm

Applications

Tested Applications:

IF/ICC

Species Specificity:

human

Positive Controls:

IF/ICC : A431 cells,

Background Information

LRRFIP1 is a transcriptional repressor which preferentially binds to the GC-rich consensus sequence (5'-AGCCCCGGCG-3') and may regulate expression of TNF, EGFR and PDGFA. The endogenous LRRFIP1/GCF2 proteins in several human cell lines, the one expressed from LRRFIP1/GCF2 cDNA in reticulolysates, and the recombinant LRRFIP1/GCF2 protein produced in bacteria have migrated as a band with a molecular weight (MW) of 160 kda in sodium dodecyl sulfate-polyacrylamide gel electrophoresis (SDS-PAGE).

Storage

Storage:

Store at -20°C. Avoid exposure to light. Stable for one year after shipment.

Storage Buffer:

PBS with 50% glycerol, 0.05% Proclin300, 0.5% BSA, pH7.3

Aliquoting is unnecessary for -20°C storage

For technical support and original validation data for this product please contact:

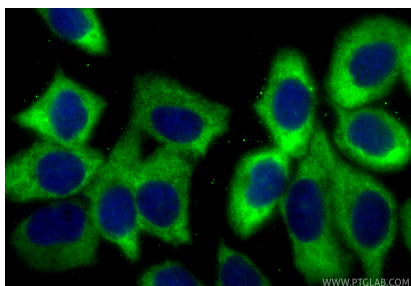
T: 4006900926

E: Proteintech-CN@ptglab.com

W: ptgcn.com

This product is exclusively available under Proteintech Group brand and is not available to purchase from any other manufacturer.

Selected Validation Data



Immunofluorescent analysis of (-20°C Methanol) fixed A431 cells using CoraLite® Plus 488 LRRFIP1 antibody (CL488-84778-4, Clone: 242161C9) at dilution of 1:200.