

For Research Use Only



CoraLite® Plus 488-conjugated Caspase 1 Recombinant monoclonal antibody

Catalog Number: **CL488-84752**

Basic Information

Catalog Number: CL488-84752	GenBank Accession Number: BC062327	Purification Method: Protein A purification
Source: Rabbit	GeneID (NCBI): 834	CloneNo.: 241966A3
Isotype: IgG	UNIPROT ID: P29466	Recommended Dilutions: IF-P: 1:50-1:500
	Full Name: caspase 1, apoptosis-related cysteine peptidase (interleukin 1, beta, convertase)	Excitation/Emission maxima wavelengths: 493 nm / 522 nm
	Calculated MW: 404 aa, 45 kDa	

Applications

Tested Applications: IF-P	Positive Controls: IF-P: mouse liver tissue,
Species Specificity: human, mouse	

Background Information

CASP1(caspase-1) is also named as IL1BC, IL1BCE and belongs to the peptidase C14A family. It is a cysteine protease that regulates inflammatory processes through its capacity to process and activate the interleukin-1-beta (IL1B), IL18, and IL33 precursor proteins. The active caspase-1 can increase cellular membrane permeability and intracellular calcium levels, which facilitates lysosome exocytosis and release of host antimicrobial factors and microbial products (PMID:21804020). It has 5 isoforms produced by alternative splicing.

Storage

Storage:
Store at -20°C. Avoid exposure to light. Stable for one year after shipment.
Storage Buffer:
PBS with 50% glycerol, 0.05% Proclin300, 0.5% BSA, pH7.3
Aliquoting is unnecessary for -20°C storage

For technical support and original validation data for this product please contact:

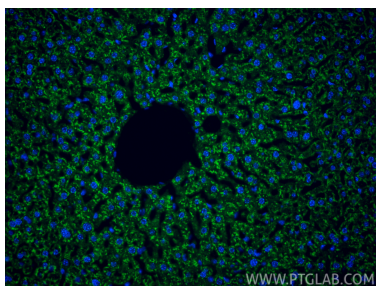
T: 4006900926

E: Proteintech-CN@ptglab.com

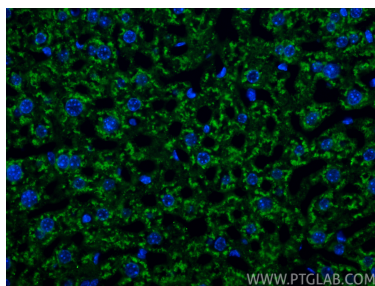
W: ptgcn.com

This product is exclusively available under Proteintech Group brand and is not available to purchase from any other manufacturer.

Selected Validation Data



Immunofluorescent analysis of (4% PFA) fixed paraffin-embedded mouse liver tissue using CoraLite® Plus 488 Caspase 1 antibody (CL488-84752, Clone: 241966A3) at dilution of 1:200. Heat mediated antigen retrieval with Tris-EDTA buffer (pH 9.0).



Immunofluorescent analysis of (4% PFA) fixed paraffin-embedded mouse liver tissue using CoraLite® Plus 488 Caspase 1 antibody (CL488-84752, Clone: 241966A3) at dilution of 1:200. Heat mediated antigen retrieval with Tris-EDTA buffer (pH 9.0).