

For Research Use Only

# CoraLite® Plus 488-conjugated Mono-Methyl-Histone H3 (Lys4) Recombinant monoclonal antibody

Catalog Number: **CL488-84740**



## Basic Information

Catalog Number:

**CL488-84740**

Source:

Rabbit

Isotype:

IgG

GenBank Accession Number:

**BC066245**

GeneID (NCBI):

**8350**

UNIPROT ID:

**P68431**

Full Name:

histone cluster 1, H3a

Observed MW:

**15 kDa**

Purification Method:

Protein A purification

CloneNo.:

**241940G8**

Recommended Dilutions:

IF/ICC: 1:50-1:500

Excitation/Emission maxima wavelengths:

**493 nm / 522 nm**

## Applications

Tested Applications:

IF/ICC

Species Specificity:

human, mouse

Positive Controls:

IF/ICC : MCF-7 cells,

## Background Information

### Storage

Storage:

Store at -20°C. Avoid exposure to light. Stable for one year after shipment.

Storage Buffer:

PBS with 50% glycerol, 0.05% Proclin300, 0.5% BSA, pH7.3

Aliquoting is unnecessary for -20°C storage

For technical support and original validation data for this product please contact:

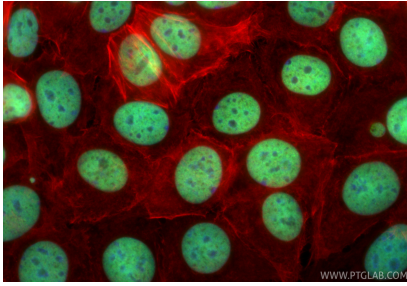
T: 4006900926

E: [Proteintech-CN@ptglab.com](mailto:Proteintech-CN@ptglab.com)

W: [ptgcn.com](http://ptgcn.com)

This product is exclusively available under Proteintech Group brand and is not available to purchase from any other manufacturer.

## Selected Validation Data



Immunofluorescent analysis of (4% PFA) fixed MCF-7 cells using CoraLite® Plus 488 Mono-Methyl-Histone H3 (Lys4) antibody (CL488-84740, Clone: 241940G8 ) at dilution of 1:200, CL594-Phalloidin (red).