

For Research Use Only

# CoraLite® Plus 488-conjugated C11orf68 Recombinant monoclonal antibody

Catalog Number: **CL488-84725-5**



## Basic Information

Catalog Number:

CL488-84725-5

Source:

Rabbit

Isotype:

IgG

Immunogen Catalog Number:

AG36023

GenBank Accession Number:

BC010512

GeneID (NCBI):

83638

UNIPROT ID:

Q9H3H3

Full Name:

chromosome 11 open reading frame  
68

Observed MW:

35 kDa

Purification Method:

Protein A purification

CloneNo.:

242221C11

Recommended Dilutions:

IF/ICC: 1:50-1:500

Excitation/Emission maxima  
wavelengths:

493 nm / 522 nm

## Applications

Tested Applications:

IF/ICC

Species Specificity:

human

Positive Controls:

IF/ICC : A431 cells,

## Background Information

BLES03 (basophilic leukemia-expressed protein 03) is a human protein of unknown function. Recent studies have shown that BLES03 is a novel eukaryotic phosphothreonine cleavage enzyme involved in the biosynthesis of dehydrogenated amino acids. The crystal structure of BLES03 has been resolved by single-wavelength anomalous scattering (SAD) with a resolution of 2.5 Å.

## Storage

Storage:

Store at -20°C. Avoid exposure to light. Stable for one year after shipment.

Storage Buffer:

PBS with 50% glycerol, 0.05% Proclin300, 0.5% BSA, pH7.3

Aliquoting is unnecessary for -20°C storage

For technical support and original validation data for this product please contact:

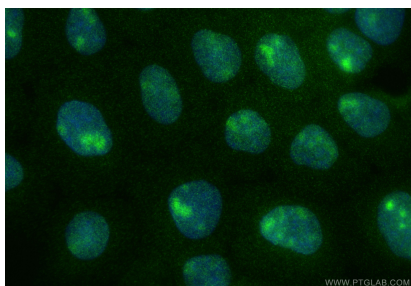
T: 4006900926

E: [Proteintech-CN@ptglab.com](mailto:Proteintech-CN@ptglab.com)

W: [ptgcn.com](http://ptgcn.com)

This product is exclusively available under Proteintech Group brand and is not available to purchase from any other manufacturer.

## Selected Validation Data



N/A