

For Research Use Only

# CoraLite® Plus 488-conjugated AEG-1/MTDH Recombinant antibody

Catalog Number: CL488-84686-4



## Basic Information

Catalog Number:

CL488-84686-4

Concentration:

1000 ug/ml

Source:

Rabbit

Isotype:

IgG

Immunogen Catalog Number:

AG4840

GenBank Accession Number:

BC045642

GeneID (NCBI):

92140

UNIPROT ID:

Q86UE4

Full Name:

metadherin

Calculated MW:

582 aa, 64 kDa

Observed MW:

75 kDa

Purification Method:

Protein A purification

CloneNo.:

242110B5

Recommended Dilutions:

IF/ICC: 1:50-1:500

Excitation/Emission maxima wavelengths:

493 nm / 522 nm

## Applications

Tested Applications:

IF/ICC

Species Specificity:

human

Positive Controls:

IF/ICC : A431 cells,

## Background Information

MTDH, also known as AEG-1, is a single-pass transmembrane protein with its gene located at chromosome 8q22, the abnormalities of which have been identified in several tumor types. MTDH is overexpressed in a number of malignancies, such as breast cancer, malignant glioma, and neuroblastoma, and its overexpression is associated with poor clinical outcome. MTDH plays an important role in the regulation of carcinogenesis and tumor progression.

## Storage

Storage:

Store at -20°C. Avoid exposure to light. Stable for one year after shipment.

Storage Buffer:

PBS with 50% glycerol, 0.05% Proclin300, 0.5% BSA, pH7.3

Aliquoting is unnecessary for -20°C storage

For technical support and original validation data for this product please contact:

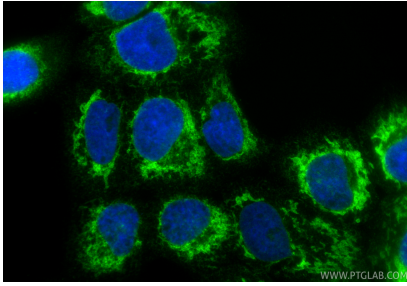
T: 4006900926

E: [Proteintech-CN@ptglab.com](mailto:Proteintech-CN@ptglab.com)

W: [ptgcn.com](http://ptgcn.com)

This product is exclusively available under Proteintech Group brand and is not available to purchase from any other manufacturer.

## Selected Validation Data



Immunofluorescent analysis of (4% PFA) fixed A431 cells using CoraLite® Plus 488 AEG-1/MTDH antibody (CL488-84686-4, Clone: 242110B5 ) at dilution of 1:200.