

# CoraLite® Plus 488-conjugated E-cadherin Recombinant monoclonal antibody

Catalog Number: **CL488-84646-3**

## Basic Information

**Catalog Number:**

CL488-84646-3

**Source:**

Rabbit

**Isotype:**

IgG

**Immunogen Catalog Number:**

EG1229

**GenBank Accession Number:**

NM\_031334.1

**GeneID (NCBI):**

83502

**UNIPROT ID:**

Q9ROT4

**Full Name:**

cadherin 1

**Calculated MW:**

99 kDa

**Observed MW:**

125 kDa

**Purification Method:**

Protein A purification

**CloneNo.:**

242018D3

**Recommended Dilutions:**

IF-P: 1:50-1:500

**Excitation/Emission maxima wavelengths:**

493 nm / 522 nm

## Applications

**Tested Applications:**

IF-P

**Species Specificity:**

human, mouse, rat

**Positive Controls:**

IF-P: rat colon tissue,

## Background Information

Cadherins are a family of transmembrane glycoproteins that mediate calcium-dependent cell-cell adhesion and play an important role in the maintenance of normal tissue architecture. E-cadherin (epithelial cadherin), also known as CDH1 (cadherin 1) or CAM 120/80, is a classical member of the cadherin superfamily which also include N-, P-, R-, and B-cadherins. E-cadherin is expressed on the cell surface in most epithelial tissues. The extracellular region of E-cadherin establishes calcium-dependent homophilic trans binding, providing specific interaction with adjacent cells, while the cytoplasmic domain is connected to the actin cytoskeleton through the interaction with p120-,  $\alpha$ -,  $\beta$ -, and  $\gamma$ -catenin (plakoglobin). E-cadherin is important in the maintenance of the epithelial integrity, and is involved in mechanisms regulating proliferation, differentiation, and survival of epithelial cell. E-cadherin may also play a role in tumorigenesis. It is considered to be an invasion suppressor protein and its loss is an indicator of high tumor aggressiveness.

## Storage

**Storage:**

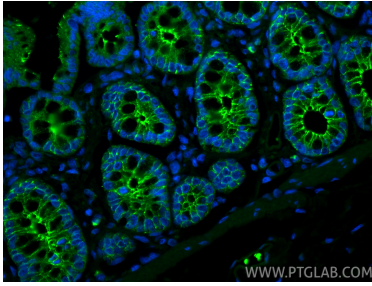
Store at -20°C. Avoid exposure to light. Stable for one year after shipment.

**Storage Buffer:**

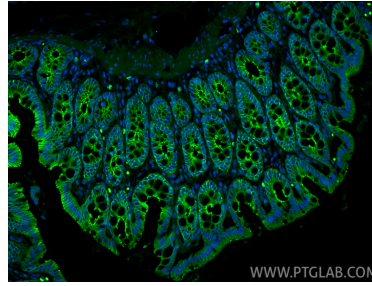
PBS with 50% glycerol, 0.05% Proclin300, 0.5% BSA, pH7.3

Aliquoting is unnecessary for -20°C storage

## Selected Validation Data



Immunofluorescent analysis of (4% PFA) fixed paraffin-embedded rat colon tissue using CoraLite® Plus 488 E-cadherin antibody (CL488-84646-3, Clone: 242018D3 ) at dilution of 1:200. Heat mediated antigen retrieval with Tris-EDTA buffer (pH 9.0).



Immunofluorescent analysis of (4% PFA) fixed paraffin-embedded rat colon tissue using CoraLite® Plus 488 E-cadherin antibody (CL488-84646-3, Clone: 242018D3 ) at dilution of 1:200. Heat mediated antigen retrieval with Tris-EDTA buffer (pH 9.0).