

For Research Use Only

CoraLite® Plus 488-conjugated SETD5 Recombinant antibody

Catalog Number: CL488-84622



Basic Information

Catalog Number:

CL488-84622

Concentration:

1000 ug/ml

Source:

Rabbit

Isotype:

IgG

Immunogen Catalog Number:

AG28929

GenBank Accession Number:

BC020956

GeneID (NCBI):

55209

UNIPROT ID:

Q9C0A6

Full Name:

SET domain containing 5

Purification Method:

Protein A purification

CloneNo.:

241903A3

Recommended Dilutions:

IF/ICC: 1:50-1:500

Excitation/Emission maxima
wavelengths:

493 nm / 522 nm

Applications

Tested Applications:

IF/ICC

Species Specificity:

human

Positive Controls:

IF/ICC : U2OS cells,

Background Information

SETD5, also known as KIAA1757, is a member of the histone lysine methyltransferase family. It has 3 isoforms and is involved in a variety of cellular functions, including cell cycle regulation and cell proliferation, and has a potential role in early embryonic development (PMID: 36875494).

Storage

Storage:

Store at -20°C. Avoid exposure to light. Stable for one year after shipment.

Storage Buffer:

PBS with 50% glycerol, 0.05% Proclin300, 0.5% BSA, pH7.3

Aliquoting is unnecessary for -20°C storage

For technical support and original validation data for this product please contact:

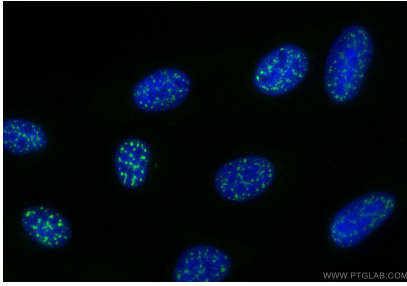
T: 4006900926

E: Proteintech-CN@ptglab.com

W: ptgcn.com

This product is exclusively available under Proteintech Group brand and is not available to purchase from any other manufacturer.

Selected Validation Data



Immunofluorescent analysis of (4% PFA) fixed U2OS cells using CoraLite® Plus 488 SETD5 antibody (CL488-84622, Clone: 241903A3) at dilution of 1:200.