

For Research Use Only

CoraLite® Plus 488-conjugated FADD Recombinant antibody

Catalog Number: CL488-84619-5



Basic Information

Catalog Number: CL488-84619-5	GenBank Accession Number: BC000334	Purification Method: Protein A purification
Concentration: 1000 ug/ml	GeneID (NCBI): 8772	CloneNo.: 241976A11
Source: Rabbit	UNIPROT ID: Q13158	Recommended Dilutions: IF/ICC 1:50-1:500
Isotype: IgG	Full Name: Fas (TNFRSF6)-associated via death domain	Excitation/Emission maxima wavelengths: 493 nm / 522 nm
Immunogen Catalog Number: AG6701	Calculated MW: 23 kDa	
	Observed MW: 29 kDa	

Applications

Tested Applications: IF/ICC	Positive Controls: IF/ICC : HeLa cells,
Species Specificity: human	

Background Information

Fas-Associated protein with Death Domain (FADD), also called MORT1 or GIG3, is encoded by the FADD gene. FADD is an adaptor protein that bridges members of the tumor necrosis factor receptor superfamily, such as the Fas-receptor, to procaspases 8 and 10 to form the death-inducing signaling complex (DISC) during apoptosis. As well as its most well known role in apoptosis, FADD has also been seen to play a role in other processes including proliferation, cell cycle regulation and development. FADD has a calculated molecular mass of 23 kDa and always can be detected as 23-30 kDa (PMID: 15390286, 22864571, 17977957)

Storage

Storage:
Store at -20°C. Avoid exposure to light. Stable for one year after shipment.
Storage Buffer:
PBS with 50% glycerol, 0.05% Proclin300, 0.5% BSA, pH7.3
Aliquoting is unnecessary for -20°C storage

For technical support and original validation data for this product please contact:

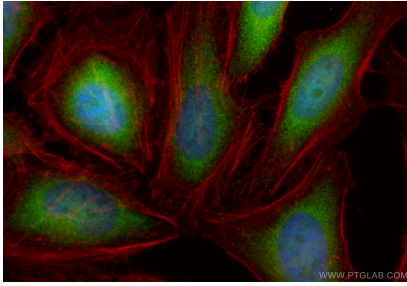
T: 4006900926

E: Proteintech-CN@ptglab.com

W: ptgcn.com

This product is exclusively available under Proteintech Group brand and is not available to purchase from any other manufacturer.

Selected Validation Data



Immunofluorescent analysis of (4% PFA) fixed HeLa cells using CoraLite® Plus 488 FADD antibody (CL488-84619-5, Clone: 241976A11) at dilution of 1:200, CL594-Phalloidin (red).