

# CoraLite® Plus 488-conjugated PSMA/GCPII Recombinant monoclonal antibody

Catalog Number: **CL488-84615-2**

## Basic Information

**Catalog Number:**

CL488-84615-2

**Source:**

Rabbit

**Isotype:**

IgG

**Immunogen Catalog Number:**

EG0216

**GenBank Accession Number:**

NM\_004476.3

**GeneID (NCBI):**

2346

**UNIPROT ID:**

Q04609

**Full Name:**

folate hydrolase (prostate-specific membrane antigen) 1

**Calculated MW:**

84KD

**Observed MW:**

100 kDa

**Purification Method:**

Protein A purification

**CloneNo.:**

242026F4

**Recommended Dilutions:**

IF/ICC: 1:50-1:500

**Excitation/Emission maxima wavelengths:**

493 nm / 522 nm

## Applications

**Tested Applications:**

IF/ICC

**Species Specificity:**

human

**Positive Controls:**

IF/ICC : LNCaP cells,

## Background Information

Prostate-specific membrane antigen (PSMA), also known as glutamate carboxypeptidase II (GCPII), is a type II transmembrane glycoprotein that has gained significant attention in the field of prostate cancer (PCa) diagnostics and therapeutics. PSMA is highly overexpressed in prostate cancer tissue, especially in aggressive, androgen-deprived, metastatic, and hormone-refractory prostate cancers. Up to 95% of prostate adenocarcinomas express PSMA receptors on their surface. Physiological expression of PSMA is observed in normal prostate epithelium, duodenum, colon, renal tubules, and sympathetic ganglia. It is also found in other tissues such as the salivary glands, lacrimal glands, and various parts of the gastrointestinal tract, though at lower levels.

## Storage

**Storage:**

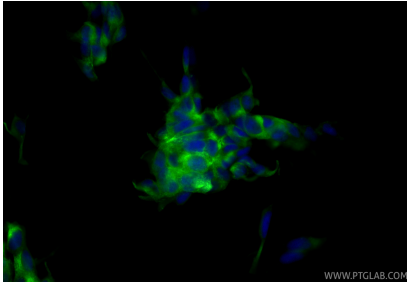
Store at -20°C. Avoid exposure to light. Stable for one year after shipment.

**Storage Buffer:**

PBS with 50% glycerol, 0.05% Proclin300, 0.5% BSA, pH7.3

Aliquoting is unnecessary for -20°C storage

## Selected Validation Data



Immunofluorescent analysis of (4% PFA) fixed LNCaP cells using CoraLite® Plus 488 PSMA/GCPII antibody (CL488-84615-2, Clone: 242026F4) at dilution of 1:200.