

For Research Use Only

CoraLite® Plus 488-conjugated INTS6 Recombinant antibody

Catalog Number: CL488-84610-3



Basic Information

Catalog Number:

CL488-84610-3

Concentration:

1000 ug/ml

Source:

Rabbit

Isotype:

IgG

Immunogen Catalog Number:

AG36146

GenBank Accession Number:

BC039829

GeneID (NCBI):

26512

UNIPROT ID:

Q9UL03

Full Name:

integrator complex subunit 6

Calculated MW:

100 kDa

Purification Method:

Protein A purification

CloneNo.:

242099E6

Recommended Dilutions:

IF/ICC: 1:50-1:500

Excitation/Emission maxima
wavelengths:

493 nm / 522 nm

Applications

Tested Applications:

IF/ICC

Species Specificity:

human, mouse

Positive Controls:

IF/ICC : HeLa cells,

Background Information

INTS6 is a component of the Integrator (INT) complex, a complex involved in the small nuclear RNAs (snRNA) U1 and U2 transcription and in their 3'-box-dependent processing.

Storage

Storage:

Store at -20°C. Avoid exposure to light. Stable for one year after shipment.

Storage Buffer:

PBS with 50% glycerol, 0.05% Proclin300, 0.5% BSA, pH7.3

Aliquoting is unnecessary for -20°C storage

For technical support and original validation data for this product please contact:

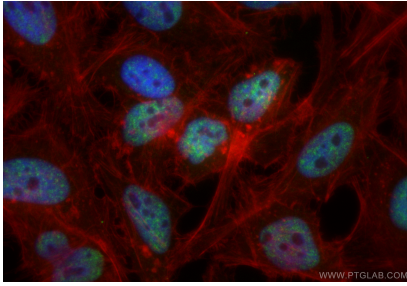
T: 4006900926

E: Proteintech-CN@ptglab.com

W: ptgcn.com

This product is exclusively available under Proteintech Group brand and is not available to purchase from any other manufacturer.

Selected Validation Data



Immunofluorescent analysis of (4% PFA) fixed HeLa cells using CoraLite® Plus 488 INTS6 antibody (CL488-84610-3, Clone: 242099E6) at dilution of 1:200, CL594-Phalloidin (red).