

For Research Use Only

CoraLite® Plus 488-conjugated CD46 Recombinant antibody

Catalog Number: CL488-84599-5



Basic Information

Catalog Number: CL488-84599-5	GenBank Accession Number: NM_172351.3	Purification Method: Protein A purification
Concentration: 1000 ug/ml	GeneID (NCBI): 4179	CloneNo.: 241764F8
Source: Rabbit	UNIPROT ID: P15529-11	Recommended Dilutions: IF/ICC: 1:50-1:500
Isotype: IgG	Full Name: CD46 molecule, complement regulatory protein	Excitation/Emission maxima wavelengths: 493 nm / 522 nm
Immunogen Catalog Number: EG1770	Calculated MW: 42kDa	
	Observed MW: 50-65 kDa	

Applications

Tested Applications: IF/ICC	Positive Controls: IF/ICC : HeLa cells,
Species Specificity: human	

Background Information

CD46, also known as Membrane cofactor protein (MCP) or MIC10, is a ubiquitously expressed type type-I transmembrane glycoprotein that acts as a cofactor for complement factor I to mediate inactivation of C3b and C4b deposited on host cells. CD46 is a receptor for a large number of pathogens, including measles virus and adenovirus (PMID: 20941397). CD46 plays a role in linking innate and adaptive immune responses. It may be involved in the fusion of the spermatozoa with the oocyte during fertilization. Mutations of the CD46 gene have been associated with some diseases including hemolytic uremic syndrome (PMID: 26054645). CD46 is expressed on most cells as four isoforms that are derived via alternative splicing (PMID: 15324743).

Storage

Storage:
Store at -20°C. Avoid exposure to light. Stable for one year after shipment.
Storage Buffer:
PBS with 50% glycerol, 0.05% Proclin300, 0.5% BSA, pH7.3
Aliquoting is unnecessary for -20°C storage

For technical support and original validation data for this product please contact:

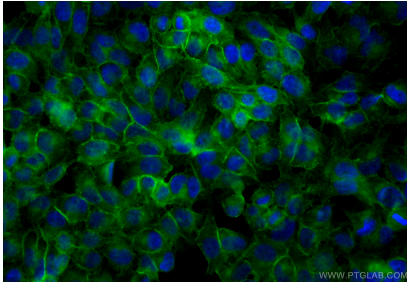
T: 4006900926

E: Proteintech-CN@ptglab.com

W: ptgcn.com

This product is exclusively available under Proteintech Group brand and is not available to purchase from any other manufacturer.

Selected Validation Data



Immunofluorescent analysis of (4% PFA) fixed HeLa cells using CoraLite® Plus 488 CD46 antibody (CL488-84599-5, Clone: 241764F8) at dilution of 1:200.