

For Research Use Only

CoraLite® Plus 488-conjugated LBR Recombinant monoclonal antibody

Catalog Number: CL488-84522-7



Basic Information

Catalog Number:

CL488-84522-7

Source:

Rabbit

Isotype:

IgG

Immunogen Catalog Number:

AG3088

GenBank Accession Number:

BC020079

GeneID (NCBI):

3930

UNIPROT ID:

Q14739

Full Name:

lamin B receptor

Calculated MW:

615 aa, 71 kDa

Purification Method:

Protein A purification

CloneNo.:

241864G10

Recommended Dilutions:

IF/ICC: 1:50-1:500

Excitation/Emission maxima
wavelengths:

493 nm / 522 nm

Applications

Tested Applications:

IF/ICC

Species Specificity:

human

Positive Controls:

IF/ICC : HeLa cells,

Background Information

Lamin-B receptor (LBR) is an integral membrane protein of the inner nuclear membrane that contains a hydrophilic N-terminal end protruding into the nucleoplasm, eight hydrophobic segments that span the membrane and a short, nucleoplasmic C-terminal tail (PMID: 28858257). LBR anchors the lamina and the heterochromatin to the inner nuclear membrane (PMID: 10828963; 28858257). It is also essential for cholesterol synthesis (PMID: 27336722). Mutations of the LBR gene have been associated with autosomal recessive HEM/Greenberg skeletal dysplasia and Pelger-Huët anomaly and Greenberg skeletal dysplasia (PMID: 12618959; 12490533).

Storage

Storage:

Store at -20°C. Avoid exposure to light. Stable for one year after shipment.

Storage Buffer:

PBS with 50% glycerol, 0.05% Proclin300, 0.5% BSA, pH7.3

Aliquoting is unnecessary for -20°C storage

For technical support and original validation data for this product please contact:

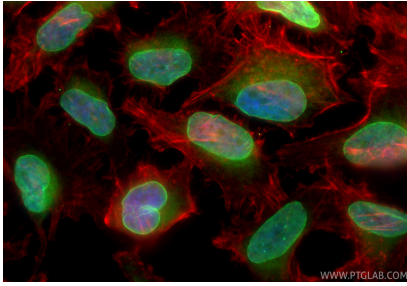
T: 4006900926

E: Proteintech-CN@ptglab.com

W: ptgcn.com

This product is exclusively available under Proteintech Group brand and is not available to purchase from any other manufacturer.

Selected Validation Data



Immunofluorescent analysis of (4% PFA) fixed HeLa cells using Coralite® Plus 488 LBR antibody (CL488-84522-7, Clone: 241864G10) at dilution of 1:200, CL594-Phalloidin (red).