

For Research Use Only

# CoraLite® Plus 488-conjugated MCM2 Recombinant antibody

Catalog Number: CL488-84511-2



## Basic Information

Catalog Number:

CL488-84511-2

Concentration:

1000 ug/ml

Source:

Rabbit

Isotype:

IgG

Immunogen Catalog Number:

AG0798

GenBank Accession Number:

BC007670

GeneID (NCBI):

4171

UNIPROT ID:

P49736

Full Name:

minichromosome maintenance  
complex component 2

Calculated MW:

102 kDa

Observed MW:

116-125 kDa

Purification Method:

Protein A purification

CloneNo.:

241968D3

Recommended Dilutions:

IF/ICC: 1:50-1:500

Excitation/Emission maxima  
wavelengths:

493 nm / 522 nm

## Applications

Tested Applications:

IF/ICC

Species Specificity:

human

Positive Controls:

IF/ICC : HeLa cells, MCF-7 cells

## Background Information

The MCM2-7 complex forms the core of the replicative helicase which acts as the molecular motor that uses ATP binding and hydrolysis to fuel the unwinding of double-stranded DNA at the replication fork in eukaryotes. This complex is the putative replicative helicase essential for 'once per cell cycle' DNA replication initiation and elongation in eukaryotic cells. MCM2, also named CDCL1 and BM28, is a human nuclear protein that plays an important role in 2 crucial steps of the cell cycle, namely, onset of DNA replication and cell division.

## Storage

Storage:

Store at -20°C. Avoid exposure to light. Stable for one year after shipment.

Storage Buffer:

PBS with 50% glycerol, 0.05% Proclin300, 0.5% BSA, pH7.3

Aliquoting is unnecessary for -20°C storage

For technical support and original validation data for this product please contact:

T: 4006900926

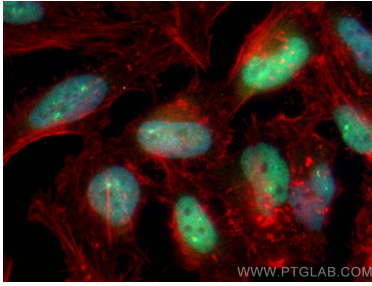
E: [Proteintech-CN@ptglab.com](mailto:Proteintech-CN@ptglab.com)

W: [ptgcn.com](http://ptgcn.com)

This product is exclusively available under Proteintech Group brand and is not available to purchase from any other manufacturer.

---

## Selected Validation Data



Immunofluorescent analysis of (4% PFA) fixed HeLa cells using CoraLite® Plus 488 MCM2 antibody (CL488-84511-2, Clone: 241968D3 ) at dilution of 1:200, CL594-Phalloidin (red).