

For Research Use Only

CoraLite® Plus 488-conjugated RBP4 Recombinant monoclonal antibody

Catalog Number: CL488-84503-4



Basic Information

Catalog Number: CL488-84503-4	GenBank Accession Number: NM_011255.3	Purification Method: Protein A purification
Source: Rabbit	GeneID (NCBI): 19662	CloneNo.: 242040D6
Isotype: IgG	UNIPROT ID: Q00724	Recommended Dilutions: IF-P: 1:50-1:500
Immunogen Catalog Number: EG1140	Full Name: retinol binding protein 4, plasma	Excitation/Emission maxima wavelengths: 493 nm / 522 nm
	Calculated MW: 23kDa	
	Observed MW: 20-23 kDa	

Applications

Tested Applications: IF-P	Positive Controls: IF-P: mouse liver tissue,
Species Specificity: mouse, rat	

Background Information

RBP4 (retinol-binding protein 4) is a carrier protein that transports vitamin A (retinol) from the liver to the peripheral tissues. Synthesized primarily by hepatocytes and adipocytes as a 21 kDa non-glycosylated protein, RBP4 is secreted into the circulation as a retinol-RBP4 complex. In plasma the RBP4-retinol complex is bound to transthyretin (TRR), which prevents prevent kidney filtration. Two truncated forms of RBP4, RBP4-L (truncated at Leu-183) and RBP4-LL (truncated at Leu-182 and Leu-183), exist by proteolytic process. RBP4-L and RBP4-LL, which do not bind TTR, are normally excreted into the urine but accumulate in the serum during renal failure. Urinary RBP4 has been reported as marker for glomerular disease. RBP4 also was identified as an adipokine that elevated in some INS-resistant states. Measurement of serum RBP4 could be used to assess the risk of INS resistance, type 2 diabetes, obesity, and cardiovascular disease. (18752671, 16034410)

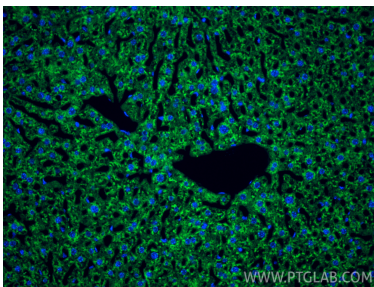
Storage

Storage:
Store at -20°C. Avoid exposure to light. Stable for one year after shipment.
Storage Buffer:
PBS with 50% glycerol, 0.05% Proclin300, 0.5% BSA, pH7.3
Aliquoting is unnecessary for -20°C storage

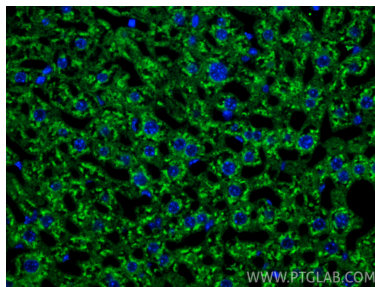
For technical support and original validation data for this product please contact:
T: 4006900926 E: Proteintech-CN@ptglab.com W: ptgcn.com

This product is exclusively available under Proteintech Group brand and is not available to purchase from any other manufacturer.

Selected Validation Data



Immunofluorescent analysis of (4% PFA) fixed paraffin-embedded mouse liver tissue using CoraLite® Plus 488 RBP4 antibody (CL488-84503-4, Clone: 242040D6) at dilution of 1:200. Heat mediated antigen retrieval with Tris-EDTA buffer (pH 9.0).



Immunofluorescent analysis of (4% PFA) fixed paraffin-embedded mouse liver tissue using CoraLite® Plus 488 RBP4 antibody (CL488-84503-4, Clone: 242040D6) at dilution of 1:200. Heat mediated antigen retrieval with Tris-EDTA buffer (pH 9.0).