

For Research Use Only

CoraLite® Plus 488-conjugated EPCR/CD201 Recombinant monoclonal antibody

Catalog Number: CL488-84494-2



Basic Information

Catalog Number:

CL488-84494-2

Source:

Rabbit

Isotype:

IgG

Immunogen Catalog Number:

EG1517

GenBank Accession Number:

NM_011171.2

GeneID (NCBI):

19124

UNIPROT ID:

Q64695

Full Name:

protein C receptor, endothelial

Calculated MW:

27kDa

Observed MW:

40-50 kDa

Purification Method:

Protein A purification

CloneNo.:

241853A9

Recommended Dilutions:

IF/ICC: 1:50-1:500

Excitation/Emission maxima
wavelengths:

493 nm / 522 nm

Applications

Tested Applications:

IF/ICC

Species Specificity:

mouse

Positive Controls:

IF/ICC : bEnd.3 cells,

Background Information

Protein C receptor (PROCR), also known as activated protein C receptor (APC receptor), EPCR, or CD201, is a transmembrane glycoprotein. EPCR promotes the activation of protein C, which has anticoagulant and cytoprotective effects. EPCR facilitates the activation of protein C by the thrombin-thrombomodulin complex but also facilitates APC-mediated cytoprotective impact on cells that involve the activation of protease-activated receptors (PAR) 1 and 3 (PMID: 27207424).

Storage

Storage:

Store at -20°C. Avoid exposure to light. Stable for one year after shipment.

Storage Buffer:

PBS with 50% glycerol, 0.05% Proclin300, 0.5% BSA, pH7.3

Aliquoting is unnecessary for -20°C storage

For technical support and original validation data for this product please contact:

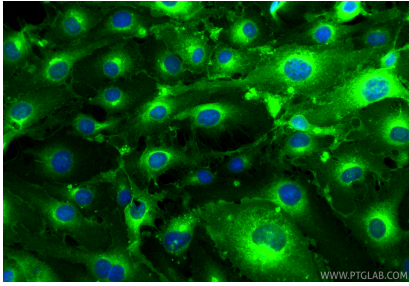
T: 4006900926

E: Proteintech-CN@ptglab.com

W: ptgcn.com

This product is exclusively available under Proteintech Group brand and is not available to purchase from any other manufacturer.

Selected Validation Data



Immunofluorescent analysis of (4% PFA) fixed bEnd.3 cells using Coralite® Plus 488 EPCR/CD201 antibody (CL488-84494-2, Clone: 241853A9) at dilution of 1:200.