

For Research Use Only

CoraLite® Plus 488-conjugated UHRF1 Recombinant antibody

Catalog Number: CL488-84489-5



Basic Information

Catalog Number:

CL488-84489-5

Concentration:

1000 ug/ml

Source:

Rabbit

Isotype:

IgG

Immunogen Catalog Number:

AG17498

GenBank Accession Number:

BC113875

GeneID (NCBI):

29128

UNIPROT ID:

Q96T88

Full Name:

ubiquitin-like with PHD and ring

finger domains 1

Calculated MW:

806 aa, 91 kDa

Observed MW:

100 kDa

Purification Method:

Protein A purification

CloneNo.:

241872G4

Recommended Dilutions:

IF/ICC: 1:50-1:500

Excitation/Emission maxima

wavelengths:

493 nm / 522 nm

Applications

Tested Applications:

IF/ICC

Species Specificity:

human

Positive Controls:

IF/ICC : HepG2 cells,

Background Information

UHRF1, also named as ICBP90, NP95 and RNF106, is a putative E3 ubiquitin-protein ligase. It may participate in methylation-dependent transcriptional regulation. UHRF1 binds to inverted 5'-CCAAT-3' box 2 in the TOP2A promoter, and activates TOP2A expression. It is important for G1/S transition and may be involved in DNA repair and chromosomal stability. UHRF1's ability to repress its direct target gene expression is dependent on PHD(UHRF1) binding to unmodified H3R2. In addition, UHRF1 is a novel metabolic guardian restricting AMPK activity(PMID: 34907338).

Storage

Storage:

Store at -20°C. Avoid exposure to light. Stable for one year after shipment.

Storage Buffer:

PBS with 50% glycerol, 0.05% Proclin300, 0.5% BSA, pH7.3

Aliquoting is unnecessary for -20°C storage

For technical support and original validation data for this product please contact:

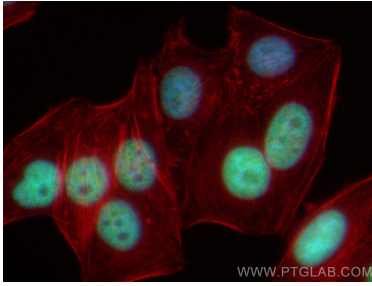
T: 4006900926

E: Proteintech-CN@ptglab.com

W: ptgcn.com

This product is exclusively available under Proteintech Group brand and is not available to purchase from any other manufacturer.

Selected Validation Data



Immunofluorescent analysis of (4% PFA) fixed HepG2 cells using CoraLite® Plus 488 UHRF1 antibody (CL488-84489-5, Clone: 241872G4) at dilution of 1:200, CL594-Phalloidin (red).