

For Research Use Only

CoraLite® Plus 488-conjugated CKAP4 Recombinant antibody

Catalog Number: CL488-84485-4



Basic Information

Catalog Number:

CL488-84485-4

Concentration:

1000 ug/ml

Source:

Rabbit

Isotype:

IgG

Immunogen Catalog Number:

AG10022

GenBank Accession Number:

BC082972

GeneID (NCBI):

10970

UNIPROT ID:

Q07065

Full Name:

cytoskeleton-associated protein 4

Calculated MW:

602 aa, 66 kDa

Observed MW:

63 kDa

Purification Method:

Protein A purification

CloneNo.:

241871B6

Recommended Dilutions:

IF/ICC: 1:50-1:500

Excitation/Emission maxima
wavelengths:

493 nm / 522 nm

Applications

Tested Applications:

IF/ICC

Species Specificity:

human

Positive Controls:

IF/ICC : A431 cells,

Background Information

CKAP4 (Cytoskeleton-associated protein 4), also known as CLIMP-63 (cytoskeleton-linking membrane protein 63), is a 63 kDa cytoskeleton-linking membrane protein. CKAP4 is a novel DKK1-binding protein on the cell surface membrane of Madin-Darby canine kidney (MDCK) epithelial cells, and evaluated CKAP4-mediated DKK1 signaling in cancer cell proliferation (PMID: 27322059). In addition, CKAP4 was modified with palmitate at Cys100 by palmitoyl acyltransferase DHHC2 (PMID: 18296695), and palmitoylation was required for CKAP4 localization to PM lipid rafts to promote cancer cell proliferation (PMID: 31744930).

Storage

Storage:

Store at -20°C. Avoid exposure to light. Stable for one year after shipment.

Storage Buffer:

PBS with 50% glycerol, 0.05% Proclin300, 0.5% BSA, pH7.3

Aliquoting is unnecessary for -20°C storage

For technical support and original validation data for this product please contact:

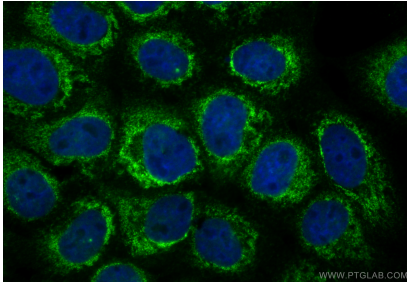
T: 4006900926

E: Proteintech-CN@ptglab.com

W: ptgcn.com

This product is exclusively available under Proteintech Group brand and is not available to purchase from any other manufacturer.

Selected Validation Data



Immunofluorescent analysis of (4% PFA) fixed A431 cells using CoraLite® Plus 488 CKAP4 antibody (CL488-84485-4, Clone: 241871B6) at dilution of 1:200.