

For Research Use Only

CoraLite® Plus 488-conjugated GSR Recombinant monoclonal antibody

Catalog Number: CL488-84480-2



Basic Information

Catalog Number:

CL488-84480-2

Source:

Rabbit

Isotype:

IgG

Immunogen Catalog Number:

AG13080

GenBank Accession Number:

BC069244

GeneID (NCBI):

2936

UNIPROT ID:

P00390

Full Name:

glutathione reductase

Calculated MW:

522 aa, 56 kDa

Observed MW:

52-55 kDa

Purification Method:

Protein A purification

CloneNo.:

241934D2

Recommended Dilutions:

IF/ICC: 1:50-1:500

Excitation/Emission maxima
wavelengths:

493 nm / 522 nm

Applications

Tested Applications:

IF/ICC

Species Specificity:

human, mouse

Positive Controls:

IF/ICC : HeLa cells,

Background Information

GSR (Glutathione reductase) is also named as GLUR, GRD1 and belongs to the class-I pyridine nucleotide-disulfide oxidoreductase family. It was first found in a black American variant red cell GSR characterized by greater electrophoretic mobility and enzyme activity per unit of hemoglobin than the normal. This protein maintains high levels of reduced glutathione in the cytosol. It has 5 isoforms produced by alternative splicing and alternative initiation.

Storage

Storage:

Store at -20°C. Avoid exposure to light. Stable for one year after shipment.

Storage Buffer:

PBS with 50% glycerol, 0.05% Proclin300, 0.5% BSA, pH7.3

Aliquoting is unnecessary for -20°C storage

For technical support and original validation data for this product please contact:

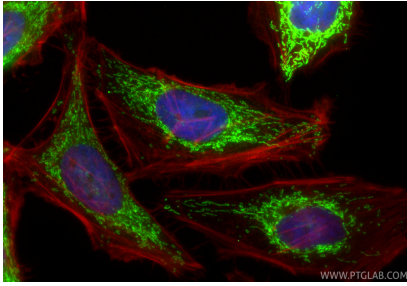
T: 4006900926

E: Proteintech-CN@ptglab.com

W: ptgcn.com

This product is exclusively available under Proteintech Group brand and is not available to purchase from any other manufacturer.

Selected Validation Data



Immunofluorescent analysis of (4% PFA) fixed HeLa cells using CoraLite® Plus 488 GSR antibody (CL488-84480-2, Clone: 241934D2) at dilution of 1:200, CL594-Phalloidin (red).