

CoraLite® Plus 488-conjugated Integrin alpha 6 Recombinant antibody

Catalog Number: CL488-84463-2

Basic Information

Catalog Number:

CL488-84463-2

Concentration:

1000 ug/ml

Source:

Rabbit

Isotype:

IgG

GenBank Accession Number:

BC136456

GeneID (NCBI):

3655

UNIPROT ID:

P23229

Full Name:

integrin, alpha 6

Calculated MW:

1073 aa, 119 kDa

Purification Method:

Protein A purification

CloneNo.:

241703E3

Recommended Dilutions:

IF/ICC: 1:50-1:500

Excitation/Emission maxima wavelengths:

493 nm / 522 nm

Applications

Tested Applications:

IF/ICC

Species Specificity:

human

Positive Controls:

IF/ICC : A431 cells,

Background Information

The integrins are a superfamily of cell adhesion receptors that bind to extracellular matrix ligands, cell-surface ligands, and soluble ligands (PMID: 17543136). They are transmembrane $\alpha\beta$ heterodimers and at least 24 distinct integrin heterodimers are formed by the combination of 18 α and eight β known subunits (PMID: 17543136; 20029421). In addition to mediating cell adhesion, integrins also play important roles in modulating signal transduction pathways that control cellular responses including migration, proliferation, differentiation, and apoptosis (PMID:19118207). Integrin alpha 6 (ITGA6, also known as CD49f or VLA-6) is a 120-kDa single-pass type 1 transmembrane glycoprotein, which combines with the beta 1 subunit (ITGB1, CD29) or beta 4 subunit (ITGB4, CD104) to form heterodimeric laminin receptors (PMID: 1976638; 2351695). Integrin alpha 6 mediates cell-to-cell and cell-to-stroma adhesion. It has also been found in many different stem cell populations and is involved in homing and connecting stem cells to their niches and regulating self-renewal mechanisms in stem cells (PMID: 28494695).

Storage

Storage:

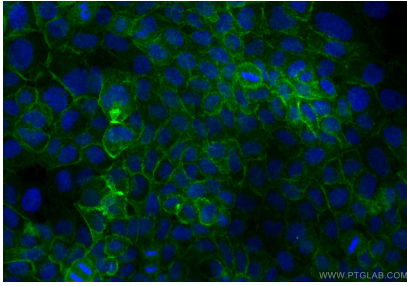
Store at -20°C. Avoid exposure to light. Stable for one year after shipment.

Storage Buffer:

PBS with 50% glycerol, 0.05% Proclin300, 0.5% BSA, pH7.3

Aliquoting is unnecessary for -20°C storage

Selected Validation Data



Immunofluorescent analysis of (4% PFA) fixed A431 cells using CoraLite® Plus 488 Integrin alpha 6 antibody (CL488-84463-2, Clone: 241703E3) at dilution of 1:200.