

For Research Use Only

# CoraLite® Plus 488-conjugated CD40 Recombinant monoclonal antibody

Catalog Number: CL488-84406-2



## Basic Information

Catalog Number: CL488-84406-2	GenBank Accession Number: NM_001250.6	Purification Method: Protein A purification
Source: Rabbit	GeneID (NCBI): 958	CloneNo.: 241760A11
Isotype: IgG	ENSEMBL Gene ID: ENSG00000101017	Recommended Dilutions: IF/ICC: 1:50-1:500
Immunogen Catalog Number: EG1797	UNIPROT ID: P25942-1	Excitation/Emission maxima wavelengths: 493 nm / 522 nm
	Full Name: CD40 molecule, TNF receptor superfamily member 5	
	Calculated MW: 31kDa	
	Observed MW: 45 kDa	

## Applications

Tested Applications: IF/ICC	Positive Controls: IF/ICC : Raji cells,
Species Specificity: human	

## Background Information

CD40, also named as TNFRSF5 and Bp50, is a receptor for TNFSF5/CD40LG. It is a member of the TNFR superfamily and is responsible for the efficient activation of cell-mediated and humoral immune responses via activated T cells and B cells respectively. Defects in CD40 lead to hyper-IgM immunodeficiency syndrome type 3 (HIGM3) (PMID: 11675497). This is an autosomal recessive disorder that includes the inability of B cells to undergo isotype switching, a key step in the final differentiation of the humoral immune response, and an inability to mount an antibody-specific immune response.

## Storage

**Storage:**  
Store at -20°C. Avoid exposure to light. Stable for one year after shipment.  
**Storage Buffer:**  
PBS with 50% glycerol, 0.05% Proclin300, 0.5% BSA, pH7.3  
Aliquoting is unnecessary for -20°C storage

For technical support and original validation data for this product please contact:

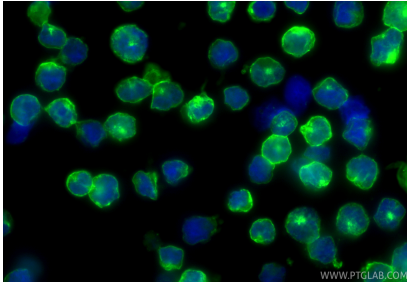
T: 4006900926

E: [Proteintech-CN@ptglab.com](mailto:Proteintech-CN@ptglab.com)

W: [ptgcn.com](http://ptgcn.com)

This product is exclusively available under Proteintech Group brand and is not available to purchase from any other manufacturer.

## Selected Validation Data



Immunofluorescent analysis of (4% PFA) fixed Raji cells using CoraLite® Plus 488 CD40 antibody (CL488-84406-2, Clone: 241760A11 ) at dilution of 1:200.