

For Research Use Only

# CoraLite® Plus 488-conjugated IL-12RB1/CD212 Recombinant antibody

Catalog Number: CL488-84391-4



## Basic Information

Catalog Number:

CL488-84391-4

Concentration:

1000 ug/ml

Source:

Rabbit

Isotype:

IgG

GenBank Accession Number:

BC029121

GeneID (NCBI):

3594

UNIPROT ID:

P42701

Full Name:

interleukin 12 receptor, beta 1

Calculated MW:

662 aa, 73 kDa

Purification Method:

Protein A purification

CloneNo.:

241661D7

Recommended Dilutions:

IF/ICC 1:50-1:500

Excitation/Emission maxima wavelengths:

493 nm / 522 nm

## Applications

Tested Applications:

IF/ICC

Species Specificity:

human

Positive Controls:

IF/ICC : K-562 cells,

## Background Information

IL12RB1, also named as Interleukin-12 receptor subunit beta-1 or CD212, is a 662 amino acid protein, which contains 5 fibronectin type-III domains and belongs to the type I cytokine receptor family. Type 2 subfamily. IL12RB1 localizes in the membrane and functions as an interleukin receptor which binds interleukin-12 with low affinity and is involved in IL12 transduction. Associated with IL12RB2 it forms a functional, high affinity receptor for IL12. Associates also with IL23R to form the interleukin-23 receptor which functions in IL23 signal transduction probably through activation of the Jak-Stat signaling cascade.

## Storage

Storage:

Store at -20°C. Avoid exposure to light. Stable for one year after shipment.

Storage Buffer:

PBS with 50% glycerol, 0.05% Proclin300, 0.5% BSA, pH7.3

Aliquoting is unnecessary for -20°C storage

For technical support and original validation data for this product please contact:

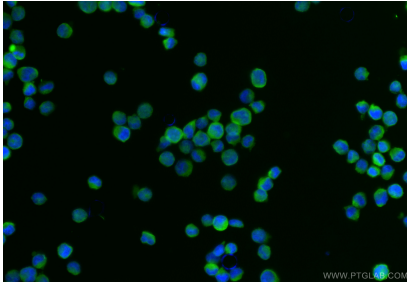
T: 4006900926

E: [Proteintech-CN@ptglab.com](mailto:Proteintech-CN@ptglab.com)

W: [ptgcn.com](http://ptgcn.com)

This product is exclusively available under Proteintech Group brand and is not available to purchase from any other manufacturer.

## Selected Validation Data



Immunofluorescent analysis of (4% PFA) fixed K-562 cells using CoraLite® Plus 488 IL12RB1 antibody (CL488-84391-4, Clone: 241661D7 ) at dilution of 1:200.