

For Research Use Only

# CoraLite® Plus 488-conjugated CCT5 Recombinant monoclonal antibody

Catalog Number: CL488-84310-2



## Basic Information

<b>Catalog Number:</b> CL488-84310-2	<b>GenBank Accession Number:</b> BC035499	<b>Purification Method:</b> Protein A purification
<b>Source:</b> Rabbit	<b>GeneID (NCBI):</b> 22948	<b>CloneNo.:</b> 241510B3
<b>Isotype:</b> IgG	<b>UNIPROT ID:</b> P48643	<b>Recommended Dilutions:</b> IF/ICC: 1:50-1:500
<b>Immunogen Catalog Number:</b> AG2146	<b>Full Name:</b> chaperonin containing TCP1, subunit 5 (epsilon)	<b>Excitation/Emission maxima wavelengths:</b> 493 nm / 522 nm
	<b>Calculated MW:</b> 541 aa, 60 kDa	
	<b>Observed MW:</b> 60 kDa	

## Applications

<b>Tested Applications:</b> IF/ICC	<b>Positive Controls:</b> IF/ICC : HepG2 cells,
<b>Species Specificity:</b> human	

## Background Information

CCT5 is a subunit of chaperonin containing TCP1 complex that is also known as the TCP1 ring complex (TRiC). CCT5 involves enhancing Wnt/  $\beta$ -catenin signalling activity in GCs through abrogating the interaction between E-cadherin and  $\beta$ -catenin (PMID: 35194191). The expression levels of CCT5 have been found to be upregulated in types of cancers, including breast cancer, colon cancer, lung cancer, glioblastoma, hepatocellular carcinoma and ovarian cancer (PMID: 36768350). Human CCT5 consist of 541 amino acids organized in  $\beta$ -sheets and  $\alpha$ -helixes distributed into three domains and has a predicted molecular weight of 60 kDa.

## Storage

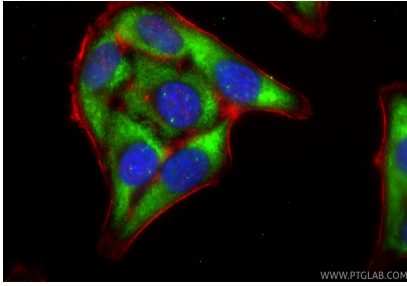
**Storage:**  
Store at -20°C. Avoid exposure to light. Stable for one year after shipment.  
**Storage Buffer:**  
PBS with 50% glycerol, 0.05% Proclin300, 0.5% BSA, pH7.3  
Aliquoting is unnecessary for -20°C storage

For technical support and original validation data for this product please contact:  
T: 4006900926 E: Proteintech-CN@ptglab.com W: ptgcn.com

This product is exclusively available under Proteintech Group brand and is not available to purchase from any other manufacturer.

---

## Selected Validation Data



Immunofluorescent analysis of (-20°C Ethanol) fixed HepG2 cells using CoraLite® Plus 488 CCT5 antibody (CL488-84310-2, Clone: 241510B3 ) at dilution of 1:200, CL594-Phalloidin (red).