

For Research Use Only

CoraLite® Plus 488-conjugated NPEPPS Recombinant antibody

Catalog Number: CL488-84230-5



Basic Information

Catalog Number: CL488-84230-5	GenBank Accession Number: BC065294	Purification Method: Protein A purification
Concentration: 1000 ug/ml	GeneID (NCBI): 9520	CloneNo.: 241502G1
Source: Rabbit	UNIPROT ID: P55786	Recommended Dilutions: IF/ICC: 1:50-1:500
Isotype: IgG	Full Name: aminopeptidase puromycin sensitive	Excitation/Emission maxima wavelengths: 493 nm / 522 nm
Immunogen Catalog Number: AG36035	Observed MW: 103 kda	

Applications

Tested Applications: IF/ICC	Positive Controls: IF/ICC : A549 cells,
Species Specificity: human, mouse, rat	

Background Information

NPEPPS, also known as PSA, is a member of the oxytocinase subfamily of the M1 aminopeptidase family. NPEPPS encodes puromycin-sensitive aminopeptidase, a zinc metallopeptidase that hydrolyzes amino acids from the N-terminus of its substrate. The protein has 2 isoforms and is located in the cytoplasm.

Storage

Storage:
Store at -20°C. Avoid exposure to light. Stable for one year after shipment.
Storage Buffer:
PBS with 50% glycerol, 0.05% Proclin300, 0.5% BSA, pH7.3
Aliquoting is unnecessary for -20°C storage

For technical support and original validation data for this product please contact:

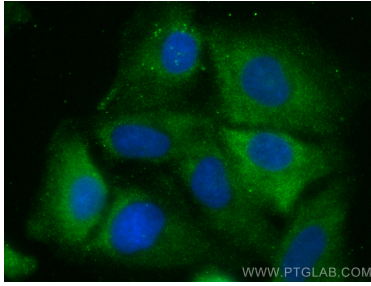
T: 4006900926

E: Proteintech-CN@ptglab.com

W: ptgcn.com

This product is exclusively available under Proteintech Group brand and is not available to purchase from any other manufacturer.

Selected Validation Data



Immunofluorescent analysis of (-20°C Methanol) fixed A549 cells using CoraLite® Plus 488 NPEPPS antibody (CL488-84230-5, Clone: 241502G1) at dilution of 1:100.