

For Research Use Only

CoraLite® Plus 488-conjugated S100A4 Recombinant monoclonal antibody

Catalog Number: **CL488-84221**



Basic Information

Catalog Number:	GenBank Accession Number:	Purification Method:
CL488-84221	BC016300	Protein A purification
Source:	GeneID (NCBI):	CloneNo.:
Rabbit	6275	241448A12
Isotype:	ENSEMBL Gene ID:	Recommended Dilutions:
IgG	ENSG00000196154	IF/ICC: 1:50-1:500
Immunogen Catalog Number:	UNIPROT ID:	Excitation/Emission maxima wavelengths:
AG9019	P26447	493 nm / 522 nm
	Full Name:	
	S100 calcium binding protein A4	
	Calculated MW:	
	101 aa, 12 kDa	
	Observed MW:	
	10-12 kDa	

Applications

Tested Applications:	Positive Controls:
IF/ICC	IF/ICC : HeLa cells,
Species Specificity:	
human	

Background Information

S100A4 is a member of the S100 family of calcium-binding proteins. The S100 family members have been involved in the regulation of a number of cellular processes such as cell cycle progression and differentiation. S100A4 is known to localize to and function in the nucleus, cytoplasm of cells, and the extracellular space. S100A4 has also been shown to be associated with tumor growth, motility, invasion, metastasis, angiogenesis, apoptosis, and chemoresistance. It is a fibroblast-specific protein associated with mesenchymal cell morphology and motility, is expressed during epithelial-mesenchymal transformations (EMT) in vivo (PMID: 9362334). It is a specific prognostic marker for renal survival in patients with IgAN (PMID: 16105038). It is also an improved marker for lung fibroblasts that could be useful for investigating the pathogenesis of pulmonary fibrosis (PMID: 15618458). Overexpression of S100A4 is correlated with a worse prognosis in patients with various types of cancer.

Storage

Storage:
Store at -20°C. Avoid exposure to light. Stable for one year after shipment.
Storage Buffer:
PBS with 50% glycerol, 0.05% Proclin300, 0.5% BSA, pH7.3
Aliquoting is unnecessary for -20°C storage

For technical support and original validation data for this product please contact:

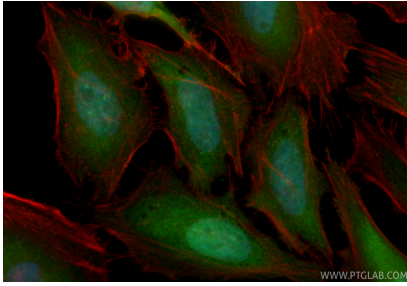
T: 4006900926

E: Proteintech-CN@ptglab.com

W: ptgcn.com

This product is exclusively available under Proteintech Group brand and is not available to purchase from any other manufacturer.

Selected Validation Data



Immunofluorescent analysis of (4% PFA) fixed HeLa cells using Coralite® Plus 488 S100A4 antibody (CL488-84221, Clone: 241448A12) at dilution of 1:200, CL594-Phalloidin (red).