

For Research Use Only

# CoraLite® Plus 488-conjugated CPN1 Recombinant monoclonal antibody

Catalog Number: CL488-84218



## Basic Information

Catalog Number: CL488-84218	GenBank Accession Number: BC027897	Purification Method: Protein A purification
Source: Rabbit	GeneID (NCBI): 1369	CloneNo.: 241481A5
Isotype: IgG	UNIPROT ID: P15169	Recommended Dilutions: IF/ICC: 1:300-1:1200
Immunogen Catalog Number: AG4035	Full Name: carboxypeptidase N, polypeptide 1	Excitation/Emission maxima wavelengths: 493 nm / 522 nm
	Calculated MW: 458 aa, 52 kDa	
	Observed MW: 40-50 kDa	

## Applications

Tested Applications: IF/ICC	Positive Controls: IF/ICC : HepG2 cells,
Species Specificity: human, mouse, rat	

## Background Information

Human carboxypeptidase N (CPN), a member of the CPN/E subfamily of "regulatory" metallo-carboxypeptidases, is an extracellular glycoprotein synthesized in the liver and secreted into the blood, where it controls the activity of vasoactive peptide hormones, growth factors and cytokines by specifically removing C-terminal basic residues. Normally, CPN circulates in blood plasma as a hetero-tetramer consisting of two 83 kDa (CPN2) domains each flanked by a 48 to 55 kDa catalytic (CPN1) domain. The C terminal region of the CPN1 subunit differs from all other family members in that it contains numerous basic residues. Proteolysis at these sites apparently happens either constitutively in the blood or during processing and secretion from the liver.

## Storage

**Storage:**  
Store at -20°C. Avoid exposure to light. Stable for one year after shipment.  
**Storage Buffer:**  
PBS with 50% glycerol, 0.05% Proclin300, 0.5% BSA, pH7.3  
Aliquoting is unnecessary for -20°C storage

For technical support and original validation data for this product please contact:

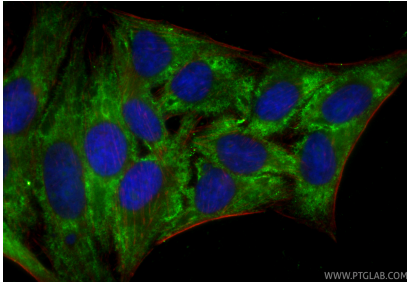
T: 4006900926

E: [Proteintech-CN@ptglab.com](mailto:Proteintech-CN@ptglab.com)

W: [ptgcn.com](http://ptgcn.com)

This product is exclusively available under Proteintech Group brand and is not available to purchase from any other manufacturer.

## Selected Validation Data



Immunofluorescent analysis of (-20°C Ethanol) fixed HepG2 cells using CoraLite® Plus 488 CPN1 antibody (CL488-84218, Clone: 241481A5 ) at dilution of 1:600, CL594-Phalloidin (red).