

For Research Use Only

CoraLite® Plus 488-conjugated ATAD1 Recombinant antibody

Catalog Number: CL488-84194-6



Basic Information

Catalog Number: CL488-84194-6	GenBank Accession Number: BC010868	Purification Method: Protein A purification
Concentration: 1000 ug/ml	GeneID (NCBI): 84896	CloneNo.: 241449D12
Source: Rabbit	UNIPROT ID: Q8NBU5	Recommended Dilutions: IF/ICC: 1:50-1:500
Isotype: IgG	Full Name: ATPase family, AAA domain containing 1	Excitation/Emission maxima wavelengths: 493 nm / 522 nm
Immunogen Catalog Number: AG10343	Calculated MW: 361 aa, 41 kDa	
	Observed MW: 32-37 kDa	

Applications

Tested Applications: IF/ICC	Positive Controls: IF/ICC : HeLa cells,
Species Specificity: human, mouse, rat	

Background Information

The mitochondrial AAA (ATPase Associated with diverse cellular Activities) protein ATAD1 (in humans; Msp1 in yeast) removes mislocalized membrane proteins, as well as stuck import substrates from the mitochondrial outer membrane, facilitating their re-insertion into their cognate organelles and maintaining mitochondria's protein import capacity.

Storage

Storage:
Store at -20°C. Avoid exposure to light. Stable for one year after shipment.
Storage Buffer:
PBS with 50% glycerol, 0.05% Proclin300, 0.5% BSA, pH7.3
Aliquoting is unnecessary for -20°C storage

For technical support and original validation data for this product please contact:

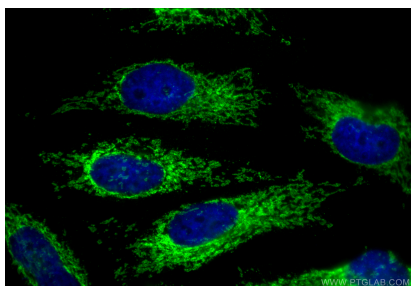
T: 4006900926

E: Proteintech-CN@ptglab.com

W: ptgcn.com

This product is exclusively available under Proteintech Group brand and is not available to purchase from any other manufacturer.

Selected Validation Data



Immunofluorescent analysis of (4% PFA) fixed HeLa cells using CoraLite® Plus 488 ATAD1 antibody (CL488-84194-6, Clone: 241449D12) at dilution of 1:200.