

For Research Use Only

CoraLite® Plus 488-conjugated AP2S1 Recombinant antibody

Catalog Number: CL488-84174-3



Basic Information

Catalog Number:

CL488-84174-3

Size:

1000 µg/ml

Source:

Rabbit

Isotype:

IgG

Immunogen Catalog Number:

AG8095

GenBank Accession Number:

BC006337

GeneID (NCBI):

1175

UNIPROT ID:

P53680

Full Name:

adaptor-related protein complex 2,
sigma 1 subunit

Calculated MW:

142 aa, 17 kDa

Observed MW:

15-17 kDa

Purification Method:

Protein A purification

CloneNo.:

241369F1

Recommended Dilutions:

IF/ICC 1:50-1:500

Excitation/Emission maxima
wavelengths:

493 nm / 522 nm

Applications

Tested Applications:

IF/ICC

Species Specificity:

human, mouse, rat

Positive Controls:

IF/ICC : HeLa cells,

Background Information

AP2S1 is a component of the adaptor protein complex 2 (AP-2). AP complexes are cytosolic heterotetramers that mediate the sorting of membrane proteins in the secretory and endocytic pathways. AP complexes form clathrin-coated vesicles (CCVs) by recruiting the scaffold protein, clathrin. AP complexes also play a pivotal role in cargo selection by recognizing the sorting signals within the cytoplasmic tail of integral membrane proteins. AP-2 is composed of two large adaptins (alpha-type subunit AP2A1 or AP2A2 and beta-type subunit AP2B1), a medium adaptin (mu-type subunit AP2M1), and a small adaptin (sigma-type subunit AP2S1). It works on the plasma membrane to internalize cargo in clathrin-mediated endocytosis. Missense mutations of AP2S1 affect Arg15 and lead to familial hypocalciuric hypercalcemia type 3 (FHH3), an extracellular calcium homeostasis disorder affecting the parathyroids, kidneys, and bone (PMID: 23222959).

Storage

Storage:

Store at -20°C. Avoid exposure to light. Stable for one year after shipment.

Storage Buffer:

PBS with 50% Glycerol, 0.05% Proclin300, 0.5% BSA, pH 7.3.

Aliquoting is unnecessary for -20°C storage

For technical support and original validation data for this product please contact:

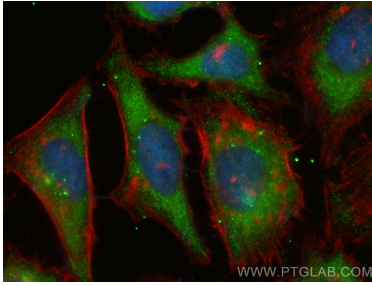
T: 4006900926

E: Proteintech-CN@ptglab.com

W: ptgcn.com

This product is exclusively available under Proteintech Group brand and is not available to purchase from any other manufacturer.

Selected Validation Data



Immunofluorescent analysis of (-20°C Ethanol) fixed HeLa cells using CoraLite® Plus 488 AP2S1 antibody (CL488-84174-3, Clone: 241369F1) at dilution of 1:200, CL594-Phalloidin (red).