

For Research Use Only

# CoraLite® Plus 488-conjugated GEMIN5 Recombinant monoclonal antibody

Catalog Number: CL488-84171-5

Featured Product



## Basic Information

Catalog Number:

CL488-84171-5

Source:

Rabbit

Isotype:

IgG

Immunogen Catalog Number:

AG19220

GenBank Accession Number:

BC113614

GeneID (NCBI):

25929

UNIPROT ID:

Q8TEQ6

Full Name:

gem (nuclear organelle) associated  
protein 5

Calculated MW:

1508 aa, 169 kDa

Observed MW:

168-180 kDa

Purification Method:

Protein A purification

CloneNo.:

241205G7

Recommended Dilutions:

IF/ICC: 1:50-1:500

Excitation/Emission maxima  
wavelengths:

493 nm / 522 nm

## Applications

Tested Applications:

IF/ICC

Species Specificity:

human

Positive Controls:

IF/ICC : HeLa cells,

## Background Information

GEMIN5 also named as Gem associated protein 5 is a 1508 amino-acid protein, which belongs to the WD repeat gemin-5 family. The molecular weight of GEMIN5 is 168 kDa. GEMIN5 is a component of SMN complex, which plays an essential role in spliceosomal snRNP assembly in the cytoplasm and is required for pre-mRNA splicing in the nucleus. GEMIN5 is identified as the factor that allows the SMN complex to distinguish snRNAs from other cellular RNAs for snRNP biogenesis. GEMIN5 is found in nucleoplasm, nuclear bodies and cytoplasm.

## Storage

Storage:

Store at -20°C. Avoid exposure to light. Stable for one year after shipment.

Storage Buffer:

PBS with 50% glycerol, 0.05% Proclin300, 0.5% BSA, pH7.3

Aliquoting is unnecessary for -20°C storage

For technical support and original validation data for this product please contact:

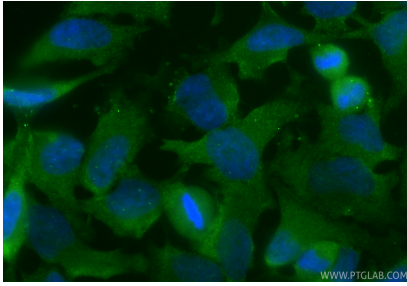
T: 4006900926

E: [Proteintech-CN@ptglab.com](mailto:Proteintech-CN@ptglab.com)

W: [ptgcn.com](http://ptgcn.com)

This product is exclusively available under Proteintech Group brand and is not available to purchase from any other manufacturer.

## Selected Validation Data



Immunofluorescent analysis of (4% PFA) fixed HeLa cells using Coralite® Plus 488 GEMIN5 antibody (CL488-84171-5, Clone: 241205G7 ) at dilution of 1:200.