

For Research Use Only

CoraLite® Plus 488-conjugated FAM136A Recombinant antibody

Catalog Number: CL488-84150-2



Basic Information

Catalog Number:

CL488-84150-2

Size:

1000 µg/ml

Source:

Rabbit

Isotype:

IgG

Immunogen Catalog Number:

AG34058

GenBank Accession Number:

BC014975

GeneID (NCBI):

84908

UNIPROT ID:

Q96C01

Full Name:

family with sequence similarity 136,

member A

Observed MW:

12 kDa

Purification Method:

Protein A purification

CloneNo.:

241433D12

Recommended Dilutions:

IF/ICC 1:50-1:500

Excitation/Emission maxima

wavelengths:

493 nm / 522 nm

Applications

Tested Applications:

IF/ICC

Species Specificity:

human, mouse, rat

Positive Controls:

IF/ICC : HeLa cells,

Background Information

FAM136A is an evolutionarily conserved nuclear gene encoding a mitochondrial protein whose specific function is unknown, but which is commonly found in neurosensory epithelial cells, where it plays a role in the electron transport chain of respiration (PMID: 37461313). FAM136A, with a molecular mass of 16-kDa, is normally expressed in the cytoplasm and has been linked to familial Meniere's disease.

Storage

Storage:

Store at -20°C. Avoid exposure to light. Stable for one year after shipment.

Storage Buffer:

PBS with 50% Glycerol, 0.05% Proclin300, 0.5% BSA, pH 7.3.

Aliquoting is unnecessary for -20°C storage

For technical support and original validation data for this product please contact:

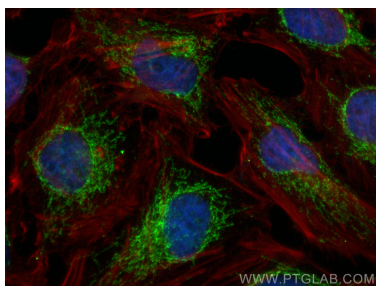
T: 4006900926

E: Proteintech-CN@ptglab.com

W: ptgcn.com

This product is exclusively available under Proteintech Group brand and is not available to purchase from any other manufacturer.

Selected Validation Data



Immunofluorescent analysis of (4% PFA) fixed HeLa cells using Coralite® Plus 488 FAM136A antibody (CL488-84150-2, Clone: 241433D12) at dilution of 1:200, CL594-Phalloidin (red).