

For Research Use Only

# CoraLite® Plus 488-conjugated CD9 Recombinant antibody

Catalog Number: CL488-84142-2



## Basic Information

Catalog Number: CL488-84142-2	GenBank Accession Number: NM_001769.4	Purification Method: Protein A purification
Concentration: 1000 ug/ml	GeneID (NCBI): 928	CloneNo.: 240830A6
Source: Rabbit	UNIPROT ID: P21926	Recommended Dilutions: IF/ICC 1:50-1:500
Isotype: IgG	Full Name: CD9 molecule	Excitation/Emission maxima wavelengths: 493 nm / 522 nm
Immunogen Catalog Number: EG1037	Calculated MW: 25 kDa	
	Observed MW: 23 kDa	

## Applications

Tested Applications: IF/ICC	Positive Controls: IF/ICC : MCF-7 cells,
Species Specificity: human	

## Background Information

The cell-surface molecule CD9, a member of the transmembrane-4 superfamily, interacts with the integrin family and other membrane proteins and is postulated to participate in cell migration and adhesion. Expression of CD9 enhances membrane fusion between muscle cells and promotes viral infection in some cells (PMID:10459022). It is often used as a mesenchymal stem cell marker (PMID:18005405). The CD9 antigen appears to be a 227-amino acid molecule with four hydrophobic domains and one N-glycosylation site (PMID: 1840589). This antibody detects bands of 23-30 kDa, which may be due to the difference in glycosylations (PMID: 8701996).

## Storage

**Storage:**  
Store at -20°C. Avoid exposure to light. Stable for one year after shipment.  
**Storage Buffer:**  
PBS with 50% glycerol, 0.05% Proclin300, 0.5% BSA, pH7.3  
Aliquoting is unnecessary for -20°C storage

For technical support and original validation data for this product please contact:

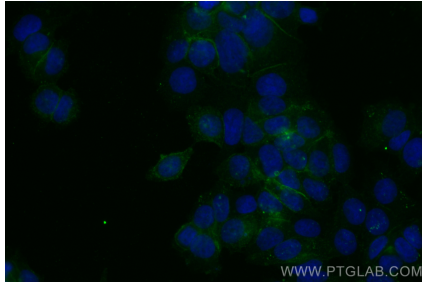
T: 4006900926

E: [Proteintech-CN@ptglab.com](mailto:Proteintech-CN@ptglab.com)

W: [ptgcn.com](http://ptgcn.com)

This product is exclusively available under Proteintech Group brand and is not available to purchase from any other manufacturer.

## Selected Validation Data



Immunofluorescent analysis of (4% PFA) fixed MCF-7 cells using CoraLite® Plus 488 CD9 antibody (CL488-84142-2, Clone: 240830A6 ) at dilution of 1:200.