

For Research Use Only

# CoraLite® Plus 488-conjugated IGFBP2 Recombinant monoclonal antibody

Catalog Number: CL488-84092-3



## Basic Information

Catalog Number:

CL488-84092-3

Source:

Rabbit

Isotype:

IgG

Immunogen Catalog Number:

EG1196

GenBank Accession Number:

NM\_008342.3

GeneID (NCBI):

16008

UNIPROT ID:

P47877

Full Name:

insulin-like growth factor binding  
protein 2

Calculated MW:

33kDa

Purification Method:

Protein A purification

CloneNo.:

241363D8

Recommended Dilutions:

IF/ICC: 1:50-1:500

Excitation/Emission maxima  
wavelengths:

493 nm / 522 nm

## Applications

Tested Applications:

IF/ICC

Species Specificity:

mouse

Positive Controls:

IF/ICC : HeLa cells,

## Background Information

IGFBP2 is a key member of the IGFBP family that is highly expressed in embryonic and fetal tissues and decreases significantly after birth. IGFBP2 mediates IGF-independent tumorigenesis by participating in intracellular and nuclear regulatory networks and may serve as an excellent prognostic biomarker in various cancers (PMID: 35546443).

## Storage

Storage:

Store at -20°C. Avoid exposure to light. Stable for one year after shipment.

Storage Buffer:

PBS with 50% glycerol, 0.05% Proclin300, 0.5% BSA, pH7.3

Aliquoting is unnecessary for -20°C storage

For technical support and original validation data for this product please contact:

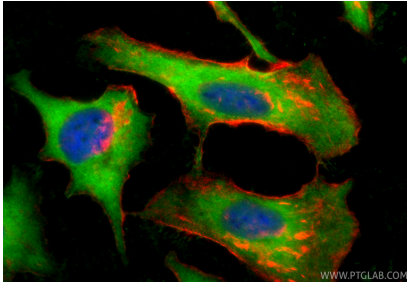
T: 4006900926

E: [Proteintech-CN@ptglab.com](mailto:Proteintech-CN@ptglab.com)

W: [ptgcn.com](http://ptgcn.com)

This product is exclusively available under Proteintech Group brand and is not available to purchase from any other manufacturer.

## Selected Validation Data



Immunofluorescent analysis of (-20°C Ethanol) fixed HeLa cells using CoraLite® Plus 488 IGFBP2 antibody (CL488-84092-3, Clone: 241363D8 ) at dilution of 1:200, CL594-Phalloidin (red).