

For Research Use Only

# CoraLite® Plus 488-conjugated CD36 Recombinant monoclonal antibody

Catalog Number: CL488-84078-4



## Basic Information

### Catalog Number:

CL488-84078-4

### Source:

Rabbit

### Isotype:

IgG

### Immunogen Catalog Number:

EG1070

### GenBank Accession Number:

NM\_001001548.3

### GeneID (NCBI):

948

### UNIPROT ID:

P16671-1

### Full Name:

CD36 molecule (thrombospondin receptor)

### Calculated MW:

53 kDa

### Observed MW:

75-85 kDa

### Purification Method:

Protein A purification

### CloneNo.:

241262F5

### Recommended Dilutions:

IF-P: 1:50-1:500

### Excitation/Emission maxima wavelengths:

493 nm / 522 nm

## Applications

### Tested Applications:

IF-P

### Species Specificity:

human

### Positive Controls:

IF-P: human placenta tissue,

## Background Information

CD36, also named as GP3B and GP4, is a membrane glycoprotein present on platelets, monocytes, erythroid precursors, endothelial cells, and several tumor cell lines. CD36 binds to collagen, thrombospondin, anionic phospholipids, long chain fatty acids and may function in the transport and/or as a regulator of fatty acid transport and oxidized LDL. CD36 may function as a cell adhesion molecule. It mediates cytoadherence of Plasmodium falciparum parasitized erythrocytes. Mutation of CD36 will cause platelet glycoprotein IV deficiency which known as CD36 deficiency. Genetic variations in CD36 are associated with susceptibility to coronary heart disease type 7 (CHDS7).

## Storage

### Storage:

Store at -20°C. Avoid exposure to light. Stable for one year after shipment.

### Storage Buffer:

PBS with 50% glycerol, 0.05% Proclin300, 0.5% BSA, pH7.3

Aliquoting is unnecessary for -20°C storage

For technical support and original validation data for this product please contact:

T: 4006900926

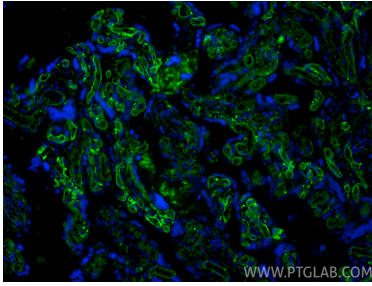
E: [Proteintech-CN@ptglab.com](mailto:Proteintech-CN@ptglab.com)

W: [ptgcn.com](http://ptgcn.com)

This product is exclusively available under Proteintech Group brand and is not available to purchase from any other manufacturer.

---

## Selected Validation Data



Immunofluorescent analysis of (4% PFA) fixed paraffin-embedded human placenta tissue using CoraLite® Plus 488 CD36 antibody (CL488-84078-4, Clone: 241262F5 ) at dilution of 1:200. Heat mediated antigen retrieval with Tris-EDTA buffer (pH 9.0).