

For Research Use Only

CoraLite® Plus 488-conjugated CD38 Recombinant monoclonal antibody

Catalog Number: CL488-84070



Basic Information

Catalog Number:

CL488-84070

Source:

Rabbit

Isotype:

IgG

Immunogen Catalog Number:

EG0110

GenBank Accession Number:

BC007964

GeneID (NCBI):

952

ENSEMBL Gene ID:

ENSG00000004468

UNIPROT ID:

P28907

Full Name:

CD38 molecule

Calculated MW:

300 aa, 34 kDa

Purification Method:

Protein A purification

CloneNo.:

241246A12

Recommended Dilutions:

IF/ICC: 1:50-1:500

Excitation/Emission maxima
wavelengths:

493 nm / 522 nm

Applications

Tested Applications:

IF/ICC

Species Specificity:

human

Positive Controls:

IF/ICC : Raji cells,

Background Information

Storage

Storage:

Store at -20°C. Avoid exposure to light. Stable for one year after shipment.

Storage Buffer:

PBS with 50% glycerol, 0.05% Proclin300, 0.5% BSA, pH7.3

Aliquoting is unnecessary for -20°C storage

For technical support and original validation data for this product please contact:

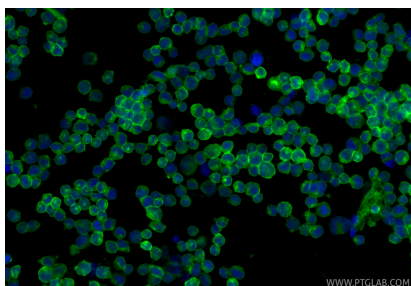
T: 4006900926

E: Proteintech-CN@ptglab.com

W: ptgcn.com

This product is exclusively available under Proteintech Group brand and is not available to purchase from any other manufacturer.

Selected Validation Data



Immunofluorescent analysis of (4% PFA) fixed Raji cells using CoraLite® Plus 488 CD38 antibody (CL488-84070, Clone: 241246A12) at dilution of 1:200.