

For Research Use Only

CoraLite® Plus 488-conjugated UTP18 Recombinant antibody

Catalog Number: CL488-84035-3



Basic Information

Catalog Number:

CL488-84035-3

Size:

1000 µg/ml

Source:

Rabbit

Isotype:

IgG

Immunogen Catalog Number:

AG34662

GenBank Accession Number:

NM_016001

GeneID (NCBI):

51096

UNIPROT ID:

Q9Y5J1

Full Name:

UTP18, small subunit (SSU)
processome component, homolog
(yeast)

Calculated MW:

62 kDa

Observed MW:

62 kDa

Purification Method:

Protein A purification

CloneNo.:

241240F1

Recommended Dilutions:

IF/ICC 1:50-1:500

Excitation/Emission maxima
wavelengths:

493 nm / 522 nm

Applications

Tested Applications:

IF/ICC

Species Specificity:

human

Positive Controls:

IF/ICC : A431 cells,

Background Information

UTP18 (UTP18 small subunit processome component), also known as WDR50. It is expected to be located in nucleus. The protein is one part of the small subunit (SSU) processome, first precursor of the small eukaryotic ribosomal subunit. During the assembly of the SSU processome in the nucleolus, many ribosome biogenesis factors, an RNA chaperone and ribosomal proteins associate with the nascent pre-rRNA and work in concert to generate RNA folding, modifications, rearrangements and cleavage as well as targeted degradation of pre-ribosomal RNA by the RNA exosome. Involved in nucleolar processing of pre-18S ribosomal RNA. The calculated molecular weight of UTP18 is 62 kDa.

Storage

Storage:

Store at -20°C. Avoid exposure to light. Stable for one year after shipment.

Storage Buffer:

PBS with 50% Glycerol, 0.05% Proclin300, 0.5% BSA, pH 7.3.

Aliquoting is unnecessary for -20°C storage

For technical support and original validation data for this product please contact:

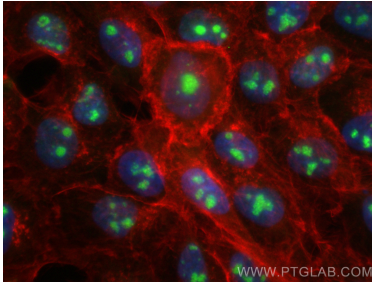
T: 4006900926

E: Proteintech-CN@ptglab.com

W: ptgcn.com

This product is exclusively available under Proteintech Group brand and is not available to purchase from any other manufacturer.

Selected Validation Data



Immunofluorescent analysis of (4% PFA) fixed A431 cells using CoraLite® Plus 488 UTP18 antibody (CL488-84035-3, Clone: 241240F1) at dilution of 1:200, (CL594-phalloidin, red).