

For Research Use Only

CoraLite® Plus 488-conjugated E-cadherin Recombinant antibody

Catalog Number: CL488-83991-4



Basic Information

Catalog Number: CL488-83991-4	GenBank Accession Number: NM_004360.5	Purification Method: Protein A purification
Concentration: 1000 ug/ml	GeneID (NCBI): 999	CloneNo.: 241098G6
Source: Rabbit	UNIPROT ID: P12830-1	Recommended Dilutions: IF/ICC 1:50-1:500
Isotype: IgG	Full Name: cadherin 1, type 1, E-cadherin (epithelial)	Excitation/Emission maxima wavelengths: 493 nm / 522 nm
Immunogen Catalog Number: EG1112	Calculated MW: 97 kDa	
	Observed MW: 135 kDa	

Applications

Tested Applications: IF/ICC	Positive Controls: IF/ICC : MCF-7 cells,
Species Specificity: human	

Background Information

Cadherins are a family of transmembrane glycoproteins that mediate calcium-dependent cell-cell adhesion and play an important role in the maintenance of normal tissue architecture. E-cadherin (epithelial cadherin), also known as CDH1 (cadherin 1) or CAM 120/80, is a classical member of the cadherin superfamily which also include N-, P-, R-, and B-cadherins. E-cadherin is expressed on the cell surface in most epithelial tissues. The extracellular region of E-cadherin establishes calcium-dependent homophilic trans binding, providing specific interaction with adjacent cells, while the cytoplasmic domain is connected to the actin cytoskeleton through the interaction with p120-, α -, β -, and γ -catenin (plakoglobin). E-cadherin is important in the maintenance of the epithelial integrity, and is involved in mechanisms regulating proliferation, differentiation, and survival of epithelial cell. E-cadherin may also play a role in tumorigenesis. It is considered to be an invasion suppressor protein and its loss is an indicator of high tumor aggressiveness.

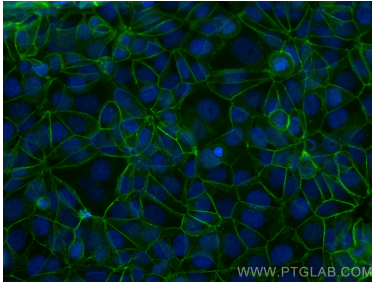
Storage

Storage:
Store at -20°C. Avoid exposure to light. Stable for one year after shipment.
Storage Buffer:
PBS with 50% glycerol, 0.05% Proclin300, 0.5% BSA, pH7.3
Aliquoting is unnecessary for -20°C storage

For technical support and original validation data for this product please contact:
T: 4006900926 E: Proteintech-CN@ptglab.com W: ptgcn.com

This product is exclusively available under Proteintech Group brand and is not available to purchase from any other manufacturer.

Selected Validation Data



Immunofluorescent analysis of (4% PFA) fixed MCF-7 cells using CoraLite® Plus 488 E-cadherin antibody (CL488-83991-4, Clone: 241098G6) at dilution of 1:200.