

For Research Use Only

# CoraLite® Plus 488-conjugated Loricrin Recombinant antibody

Catalog Number: CL488-83865



## Basic Information

Catalog Number:

CL488-83865

Size:

1000 µg/ml

Source:

Rabbit

Isotype:

IgG

GenBank Accession Number:

NM\_000427

GeneID (NCBI):

4014

UNIPROT ID:

P23490

Full Name:

loricrin

Calculated MW:

26 kDa

Purification Method:

Protein A purification

CloneNo.:

240605C8

Recommended Dilutions:

IF/ICC 1:50-1:500

Excitation/Emission maxima  
wavelengths:

493 nm / 522 nm

## Applications

Tested Applications:

IF/ICC

Species Specificity:

human

Positive Controls:

IF/ICC : A431 cells,

## Background Information

Loricrin, also named LOR and LRN, is a major component of the cornified cell envelope (CE) expressed late in epidermal differentiation in the granular layers of normal skin. This antibody is specific to Loricrin.

## Storage

Storage:

Store at -20°C. Avoid exposure to light. Stable for one year after shipment.

Storage Buffer:

PBS with 50% Glycerol, 0.05% Proclin300, 0.5% BSA, pH 7.3.

Aliquoting is unnecessary for -20°C storage

For technical support and original validation data for this product please contact:

T: 4006900926

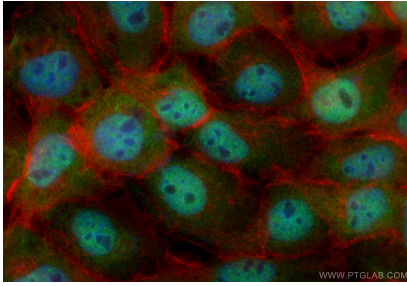
E: [Proteintech-CN@ptglab.com](mailto:Proteintech-CN@ptglab.com)

W: [ptgcn.com](http://ptgcn.com)

This product is exclusively available under Proteintech Group brand and is not available to purchase from any other manufacturer.

---

## Selected Validation Data



Immunofluorescent analysis of (4% PFA) fixed A431 cells using CoraLite® Plus 488 Loricrin antibody (CL488-83865, Clone: 240605C8 ) at dilution of 1:200, CL594-Phalloidin (red).